



Cottage is built partially over a valley, around existing forest trees which helps to shade the building at a corner of the site.



Ramp Main Entrance from carpark to the Cottage.



There are additional car parking right in front of Cottage, via a secondary stair entrance.





Bar table and chairs on the deck, facing the valley. Room 4 & 5 is located under the deck.



Entering the main entrance door, will lead you to an indoor airconditioned living hall, which can also be used as a discussion / meeting space.



Bedroom 1 with a king sized bed + bunk bed, sleeps 4, with a 50" TV, work table, ensuite bathroom, hair dryer + air conditioning. Towels are provided.

shared facility



Pool water is from natural source - 4 feet deep with a 2 feet deep zone for kids, babies. The pool water reflects the surrounding nature & is finished with granite tiles. Please note pool is shared with another two units in the compound.

shared facility



*There is a jacuzzi corner where u can get your back massaged in the main pool.
Please note pool is shared with another two units in the compound.*



Another view of the living hall



Another view of the living hall



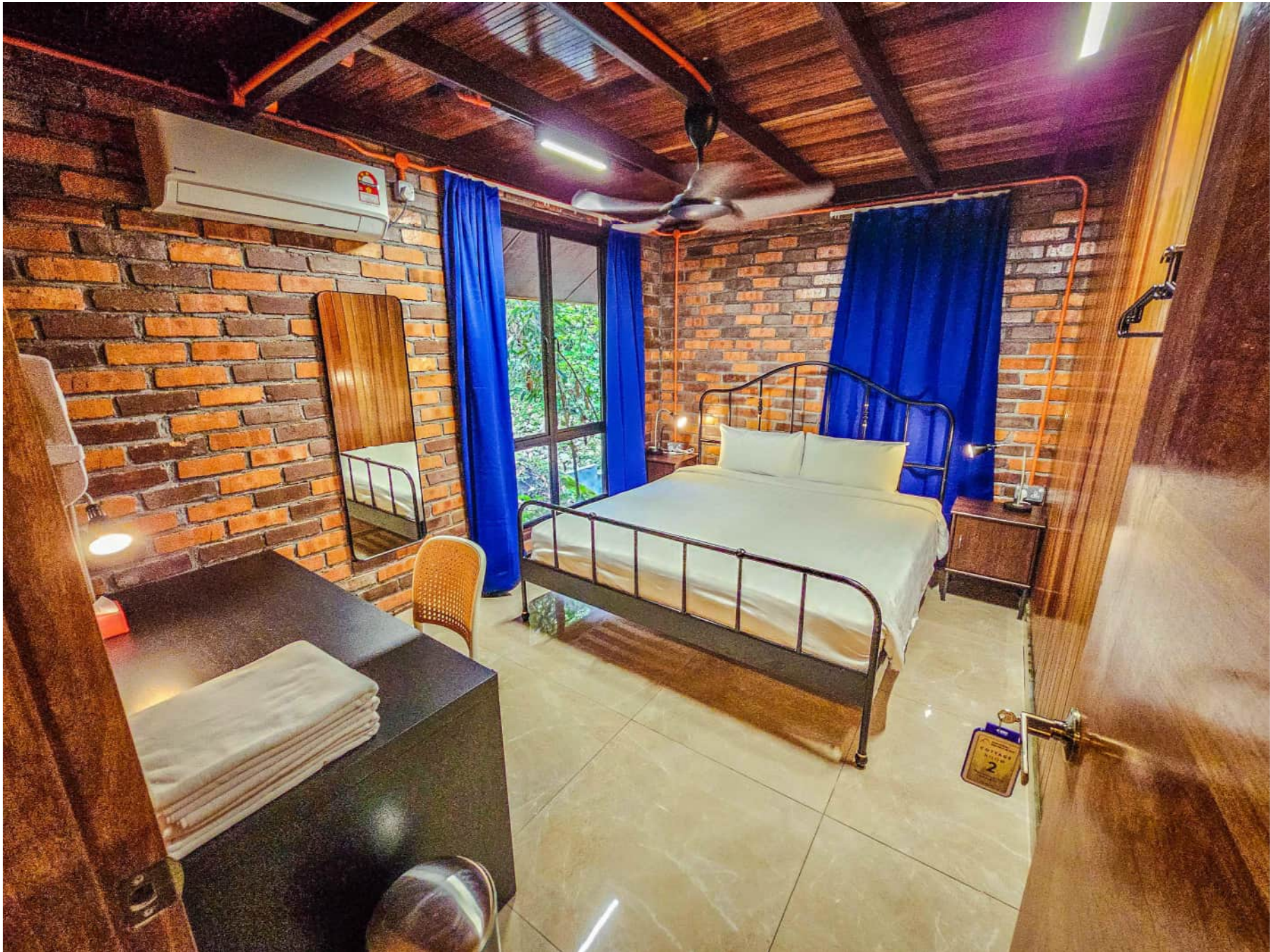
Another view of Bedroom 1



Another view of Bedroom 1



Ensuite bathroom in bedroom 1 with hot water shower. Body shower gel, hair shampoo and hand soap is provided.



*Bedroom 2 with a king sized bed, sleeps 2, with a work table, hair dryer + air conditioning. Towels are provided.
Bathroom is directly beside, shared with Living Hall.*



Another view of Bedroom 2



Bathroom that is beside bedroom 2 & accessible through the living hall with hot water shower.

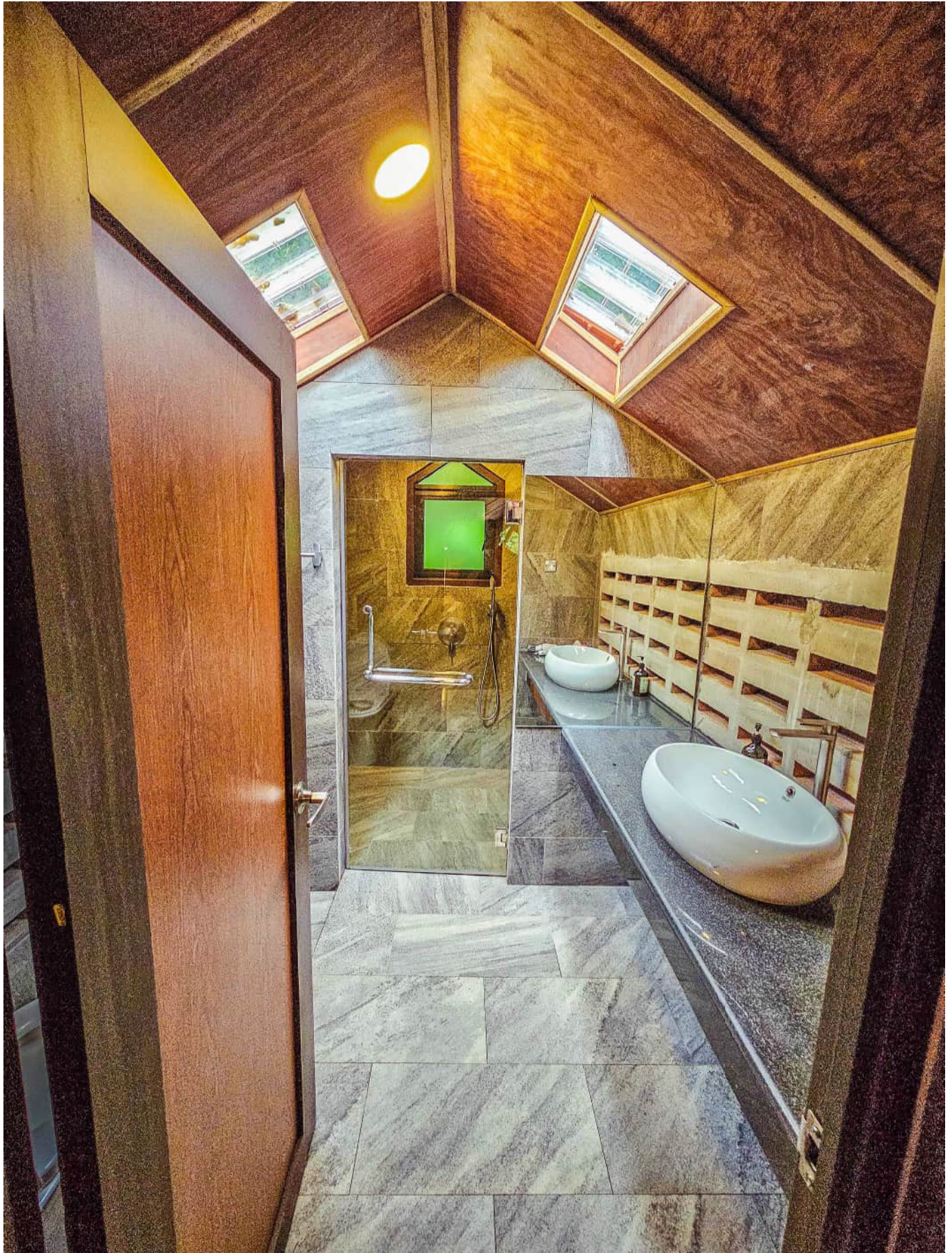
Body shower gel, hair shampoo and hand soap is provided.



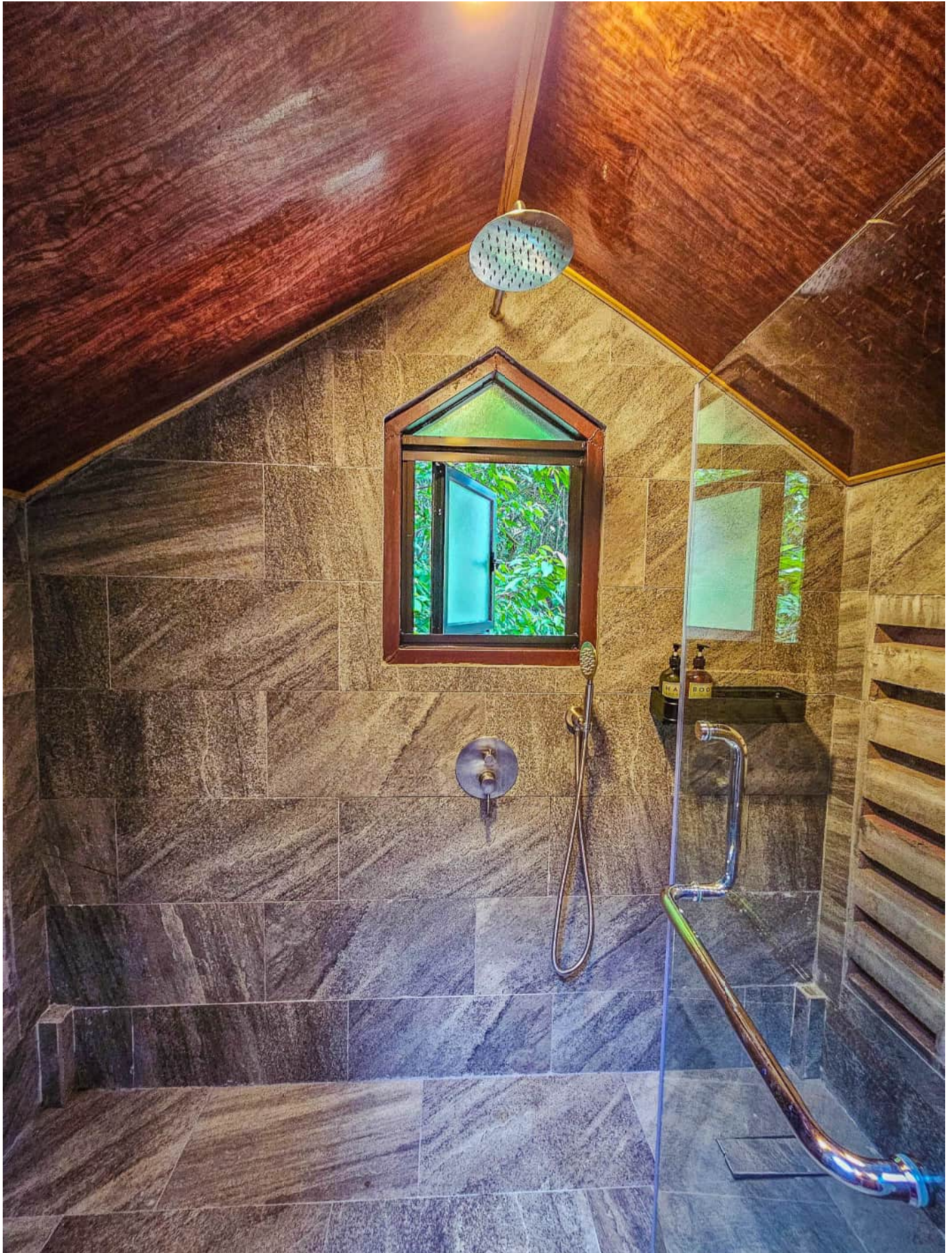
Bedroom 3 with 8 single beds, sleeps up to 8 (photo only shows 4 cause they are stacked), ensuite bathroom, hair dryer + air conditioning. Towels are provided.



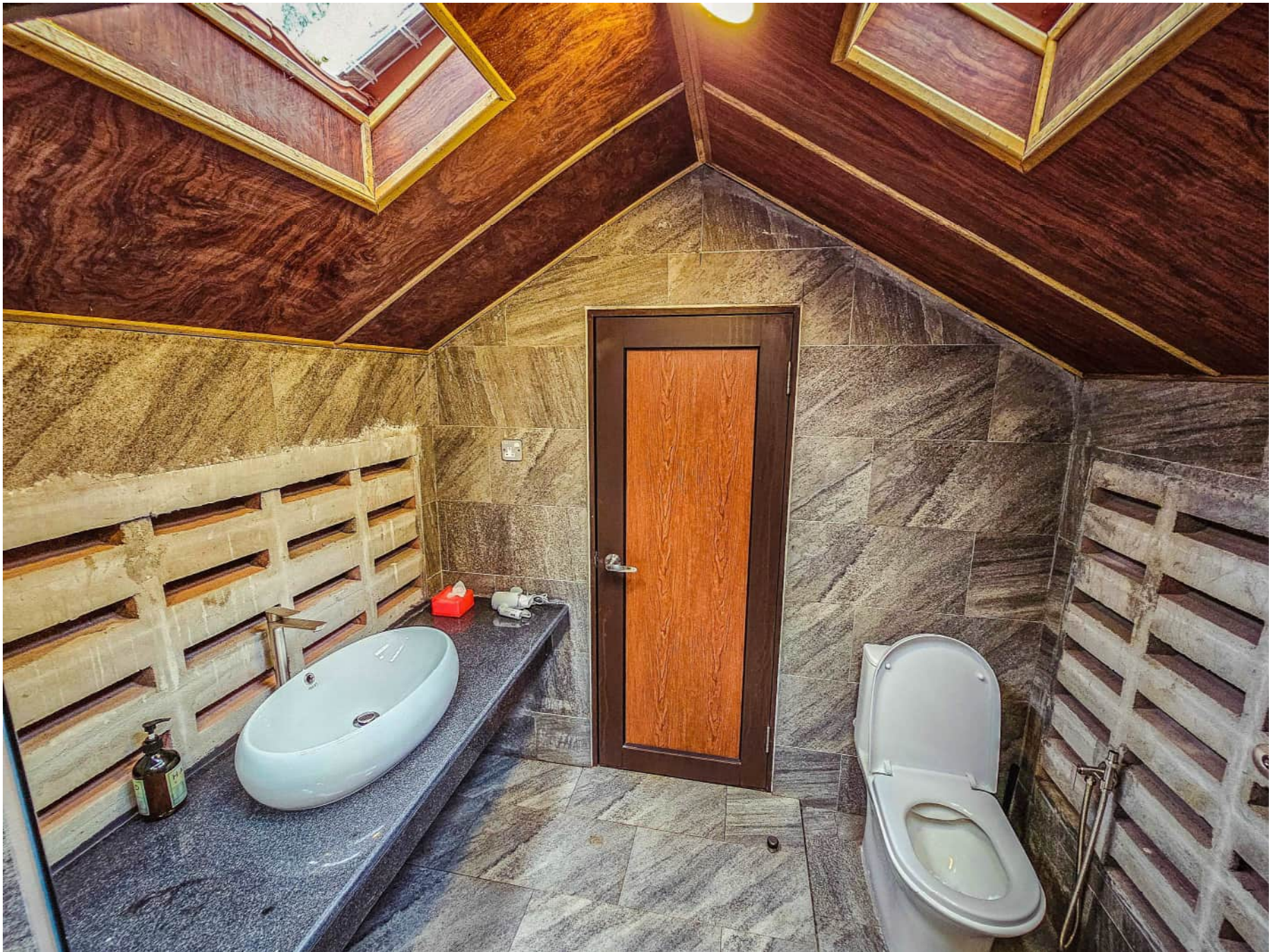
Another view of Bedroom 3



*Ensuite bathroom in bedroom 3 with hot water shower room & skylights.
Body shower gel, hair shampoo and hand soap are provided.*



Hot water shower room with a view, in bedroom 3's ensuite bathroom.



Internal view of Bathroom 3.

shared facility



The entrance pathway leading up hill to the Retreat & Cottage

shared facility



A barrel sauna (shared) is available to use during your stay, with an ewallet vending machine for snacks and drinks.

shared facility



A 14' trampoline for all ages to enjoy



There is an outdoor dining area for enjoying nature.

Monkeys occasionally try to steal foods, so please take care of your belongings & do not leave them unattended.



There is an outdoor dining area for enjoying nature. You can see the BBQ pit in this photo & monkey proof bins. Monkeys occasionally try to steal foods, so please take care of your belongings & do not leave them unattended.



Tiger & snake dolls help to scare off visiting monkeys. Mosquito killers reduce mosquito population by a lot & repellent is provided.



Kitchen provisions include: manual orange juicer, hot & cold water dispenser, spoons, forks, knives, chopsticks, chopping board, plates, cups, bowls. Fridges + freezer, oven, microwave, umbrellas, gas stoves, frying pan, wok, pots.



Pork is strictly not allowed in this house, as it is a muslim friendly kitchen.



Bedroom 4 with two king sized beds, sleeps 4, with a work table, ensuite bathroom, hair dryer + air conditioning. Towels are provided.



Another view of Bedroom 4



Ensuite bathrooms 4 & 5 are similar, with hot water shower. Body shower gel, hair shampoo and hand soap are provided.



Bedroom 4 with two king sized beds, sleeps 4, with a work table, ensuite bathroom, hair dryer + air conditioning. Towels are provided.



Another view of Bedroom 5



Another view of Bedroom 5

outside our premises

COTTAGE



View of Bukit Takun. The Cottage is adjacent, about 300 feet away.

shared facility



The shared swimming pool & jacuzzi can be used in the evenings till 10pm.

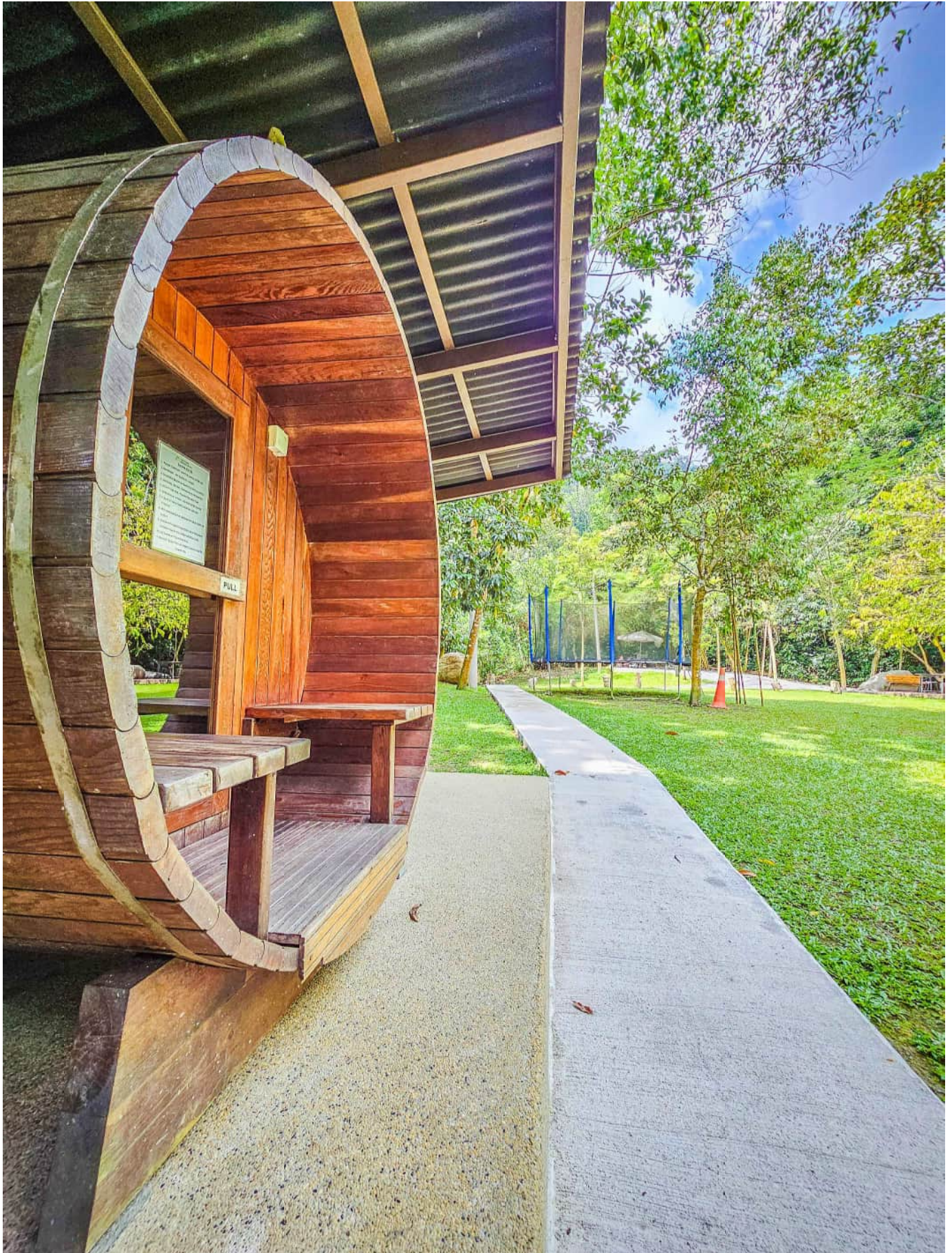
shared facility



Spend your day lounging by the pool.

shared facility

COTTAGE





*Interior of barrel sauna, which can fit comfortably 4 persons at each time, at recommended 15 mins intervals.
The water in the bucket can be sprinkled on the sauna rocks.*

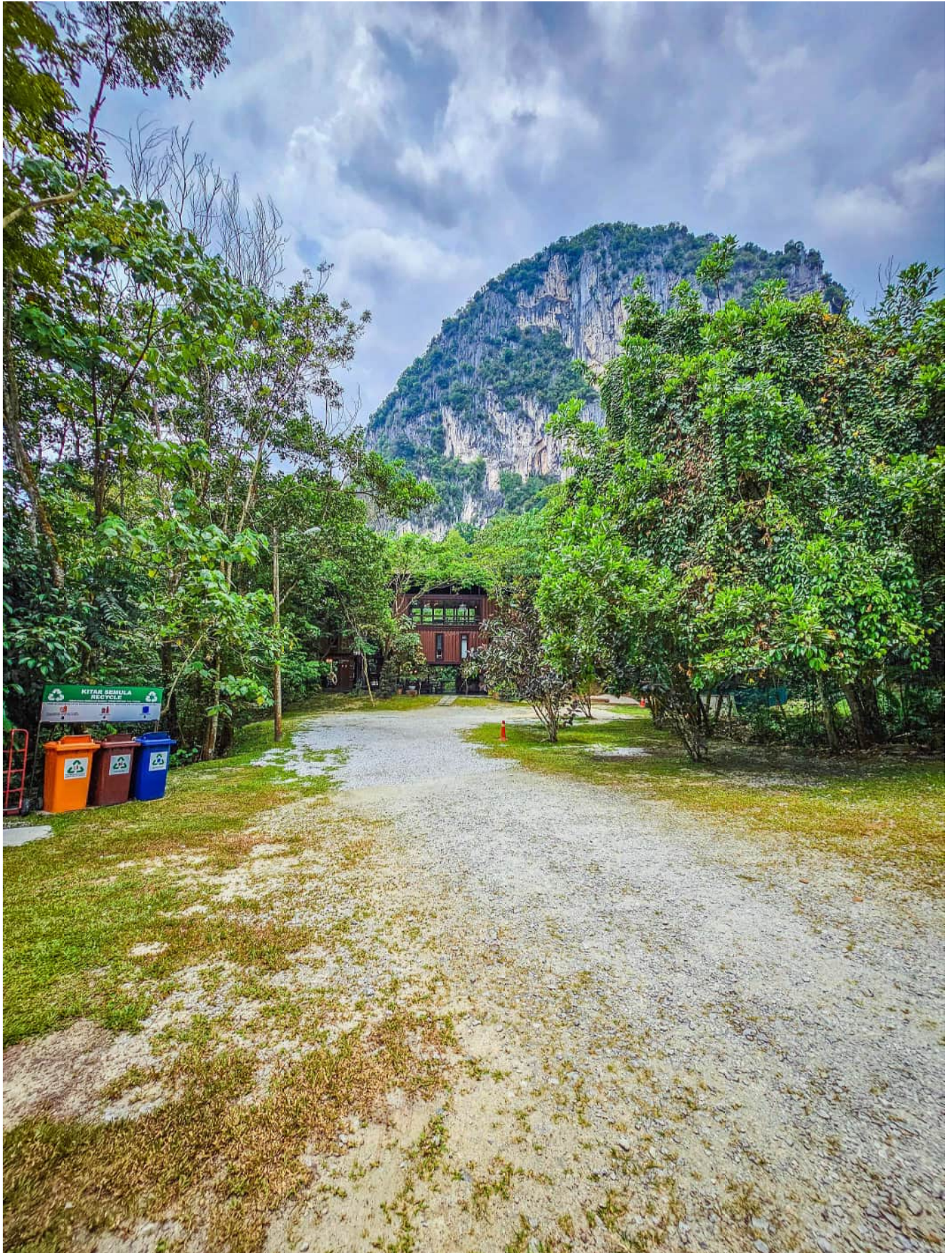
shared facility



The entrance pathway leading up hill to the Retreat & Cottage

shared facility

COTTAGE



There is ample car parking space here. Recycling bins are located at the parking area.

outside our premises

COTTAGE



Sungai Kanching Waterfalls is a 5 minute drive away. (1.5 km)

shared facility



Swimming in nature. Villa is another unit in the compound, seen in the end of this photo.

shared facility



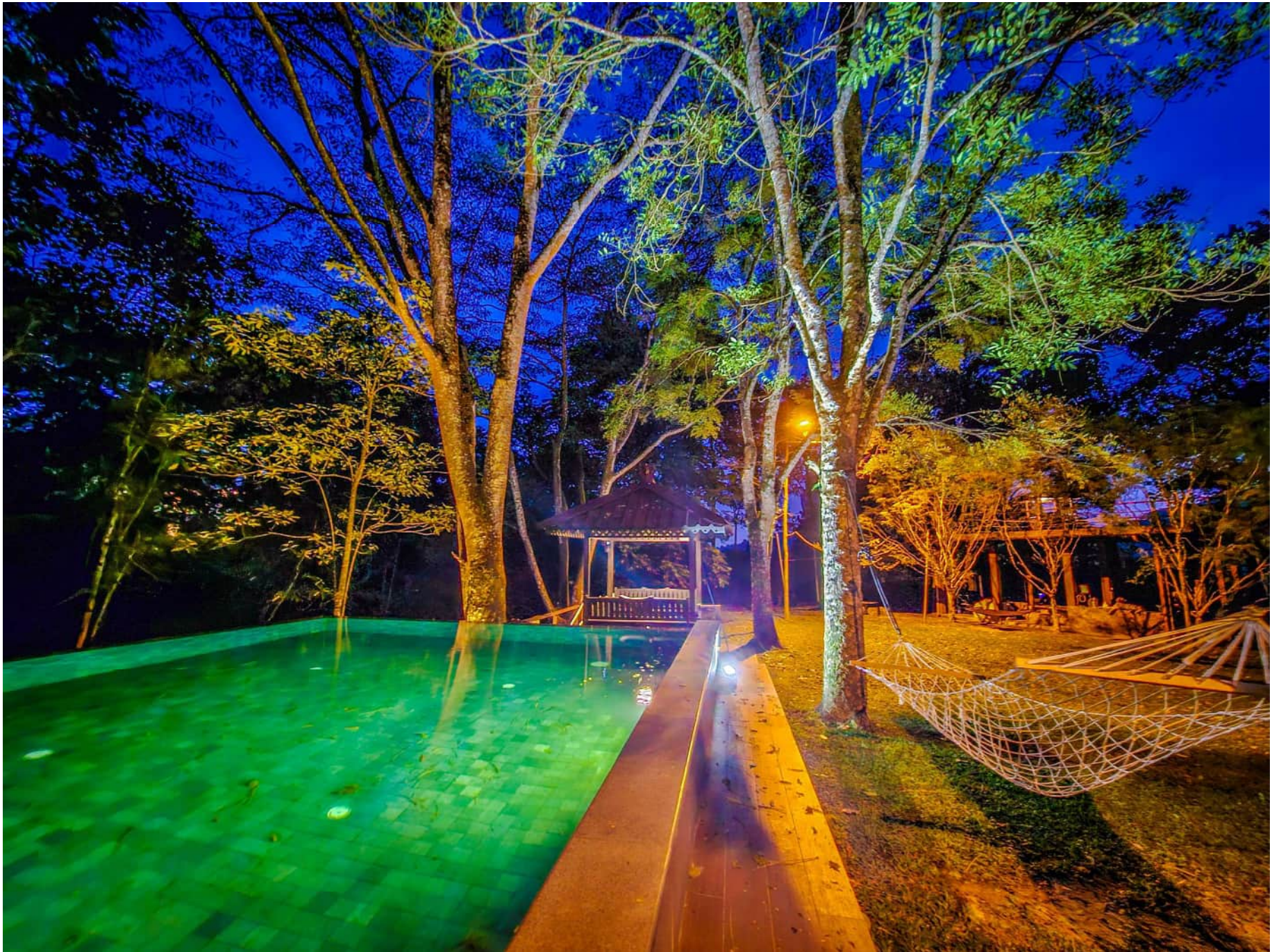
*Swimming in nature with Bukit Takun as backdrop.
Please note this pool is shared with two other units in the compound.*

shared facility



Evening use of the jacuzzi

shared facility



*An evening swim in nature / lay on the hammocks.
Please note this pool is shared with two other units in the compound.*