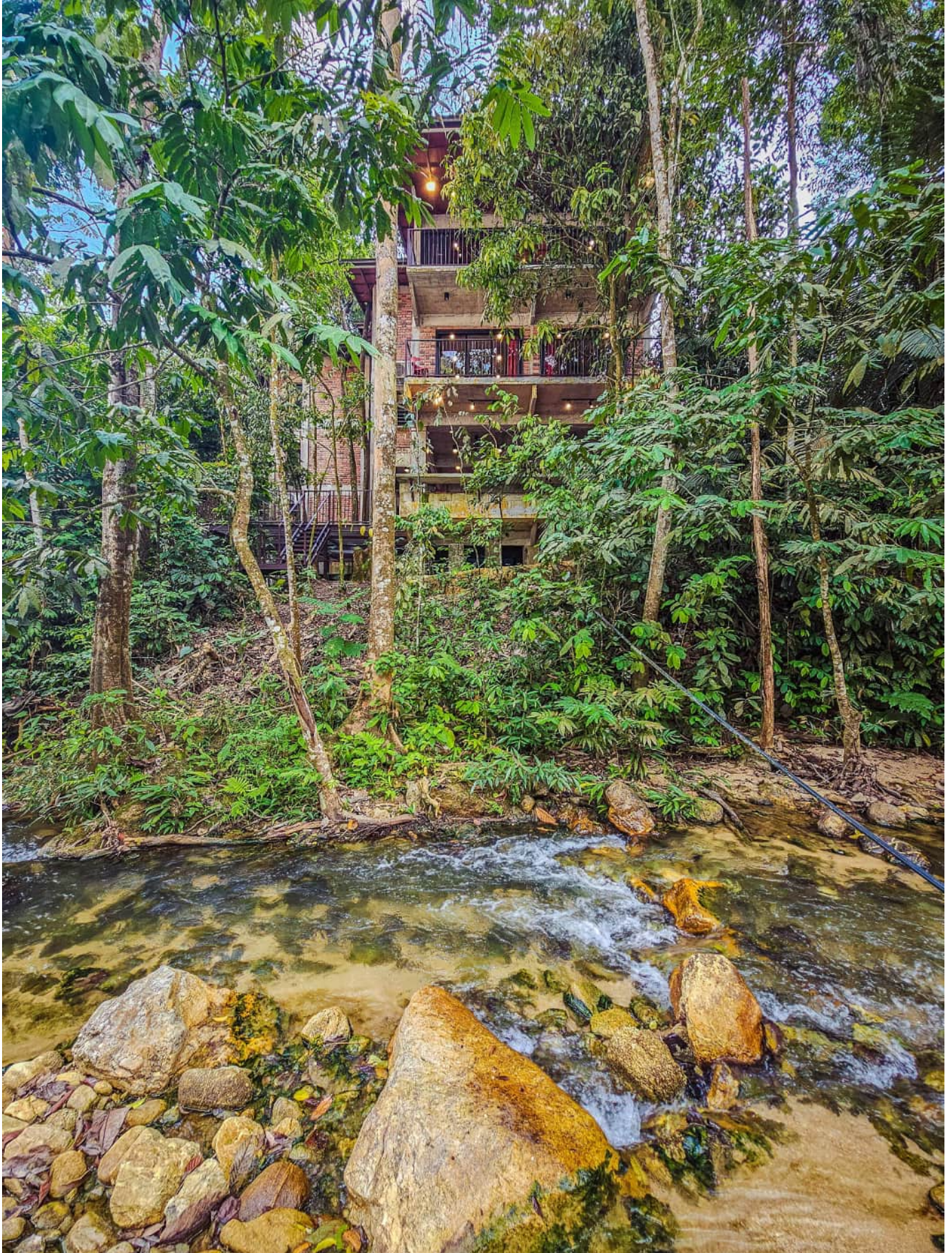




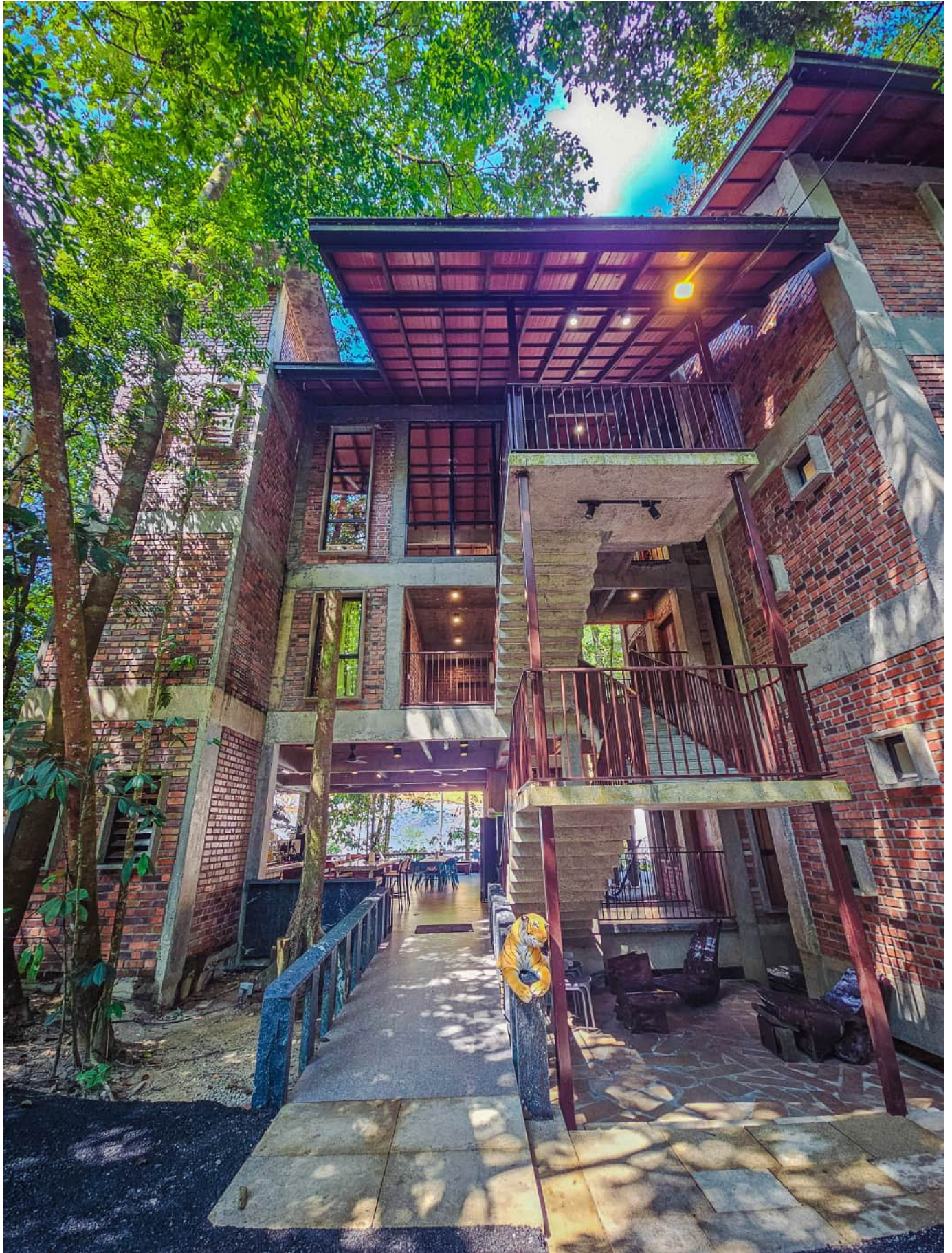
Brickhouse sits beside River Selaru & without removing any large trees, to allow guests to experience life in nature, surrounded with large forest trees & has direct access to the river via 2 staircases.



The river is shallow to soak your feet at some areas, but does have deep pockets at various sections to submerge your entire body inside as well.



Brickhouse shaded from the sun by being surrounded by huge forest trees. So guests can enjoy the outdoor areas even during a hot sunny afternoon.



The entrance to Brickhouse is via a gentle ramp from the carparking area.



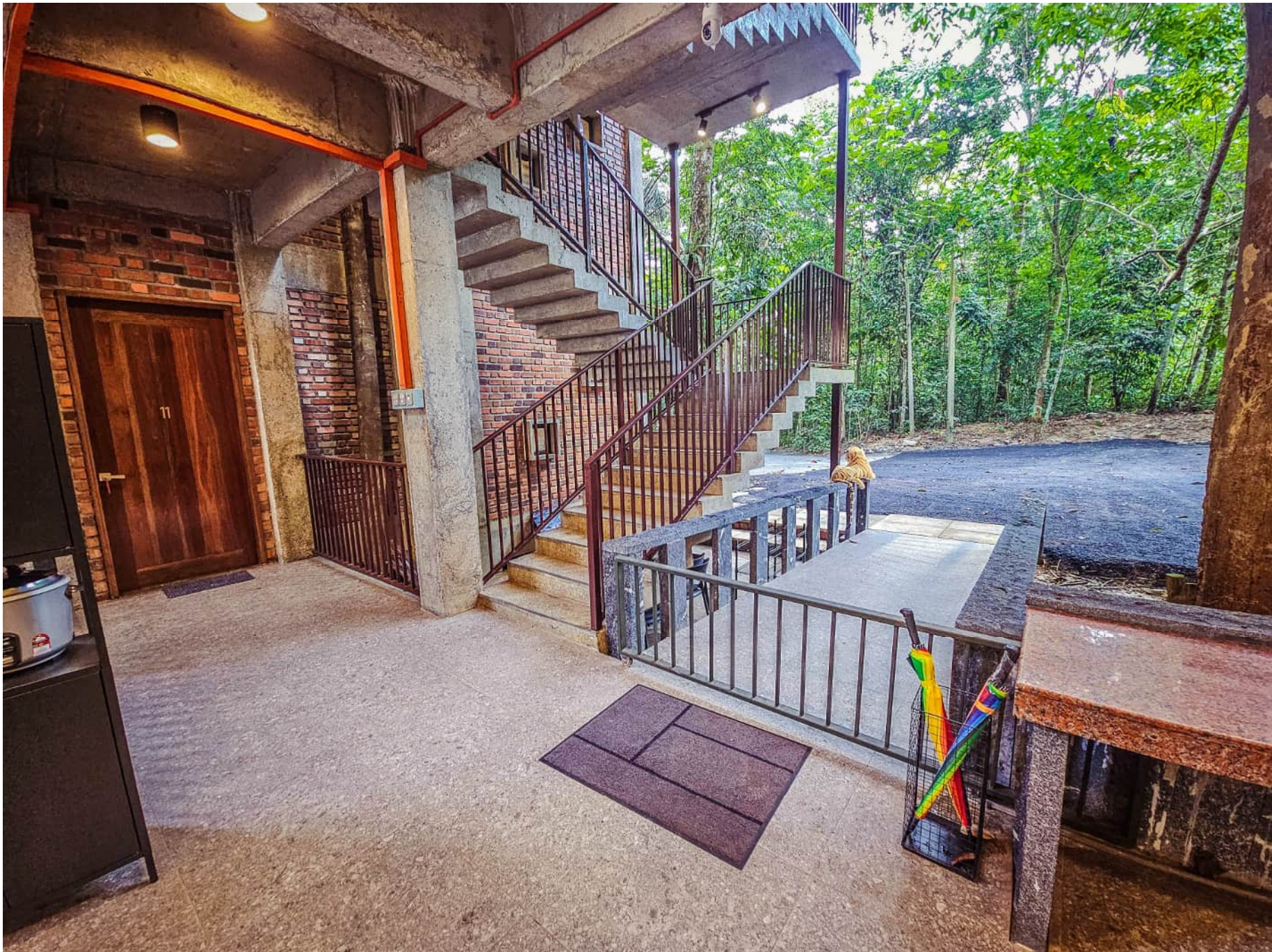
Soak yourself in the cold fresh water of River Selaru. Bring a hot drink from the dispenser and enjoy it with half your body submerged.



The indoor air-conditioned hall is huge, 12m x 7.5m (90 sqm). Table, chairs & sofa can be pushed to the side if guests' need space for indoor activities.



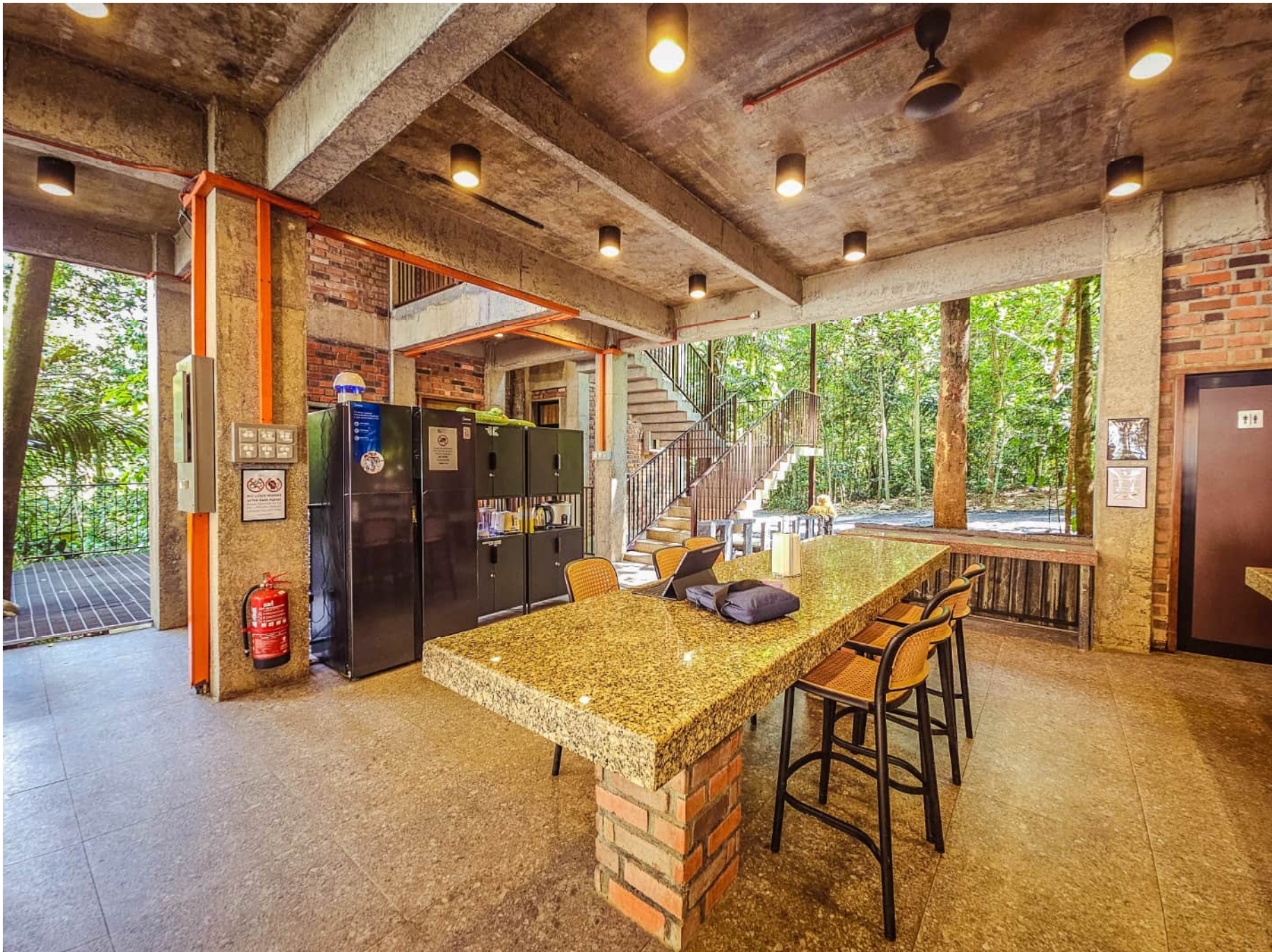
Plenty of space in front of Brickhouse for carparking



The entrance foyer has a sliding gate to prevent kids from running out. Umbrellas available for a rainy day.



There is a dining island with high chairs, pantry with sink, drinks and water dispenser, cooking facilities as well shown in this photo



The other side is the fridge and freezer, handy for guests to put in their cold items immediately upon arrival.

There are also cupboards to store dry stuffs.



The dining area is airy and spacious, facing an open courtyard deck and beside the BBQ & kitchen area.



The dining area is airy and spacious, facing an open courtyard deck and beside the BBQ & kitchen area.



Part of the dining area is finished in granite tiles & guests who sit here, has views towards river Selaru.



The Courtyard deck is open to sky, floor is galvanized steel grating.



BBQ pit is available for use at all times, even during rainy days, as it is located under shade. There is a basin immediately adjacent, for easy washing. Charcoal, bamboo fan, bamboo skewers, firestarters, foil, tongs, lighters and provided for your convenience.



There are several gas stoves with pots and pans, kualiti, for your cooking use.



The courtyard has access to a set of stairs leading to the river below.



The other access is via the dining area. A few steps to reach the river below. At the top of this photo, you can see a tunnel for the ECRL (East Coast Railway Line) which is under construction.



The steps pathway leading from the house to River Selaru. It is a few steps away only.



Access to the river from dining area is equipped with a sliding gate that guests can use as a barrier / deterrent for kids



Access to the river from courtyard is also equipped with a sliding gate that guests can use as a barrier / deterrent for kids



The Courtyard deck is open to sky, surrounded by trees. There is a hammock area beside the bbq area



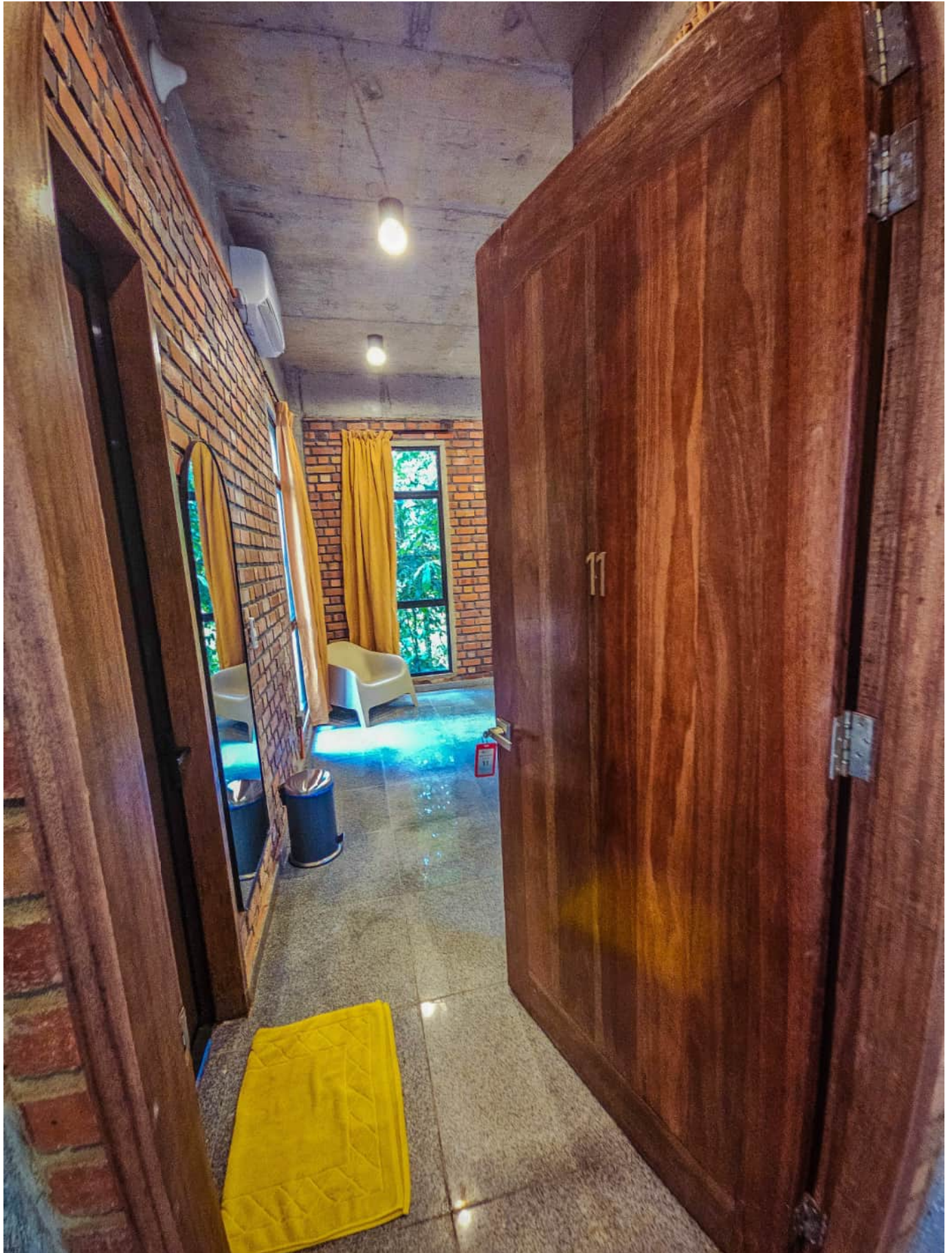
Fridge & freezer: 660L capacity. Two set of cupboards, one is empty to store your own dry kitchen items, whilst the other cupboard has: bread, butter, jam, eggs, oranges, first aid kit, mosquito coils & repellent, bbq provisions, steamboat pots, blender, pestle mortar, condiments, etc.



Cups, bowls, plates, cutlery, orange juice presser, hot drinks dispenser, cold and hot water dispenser located here.



Fridge & freezer: 660L capacity



This is bedroom 11 on the ground floor, which is suitable for elderly / less able bodied guests, as no stair usage is required to access this bedroom. It is same level as the carpark, dining area, kitchen and bbq area. It sleeps 2 to 6 pax.

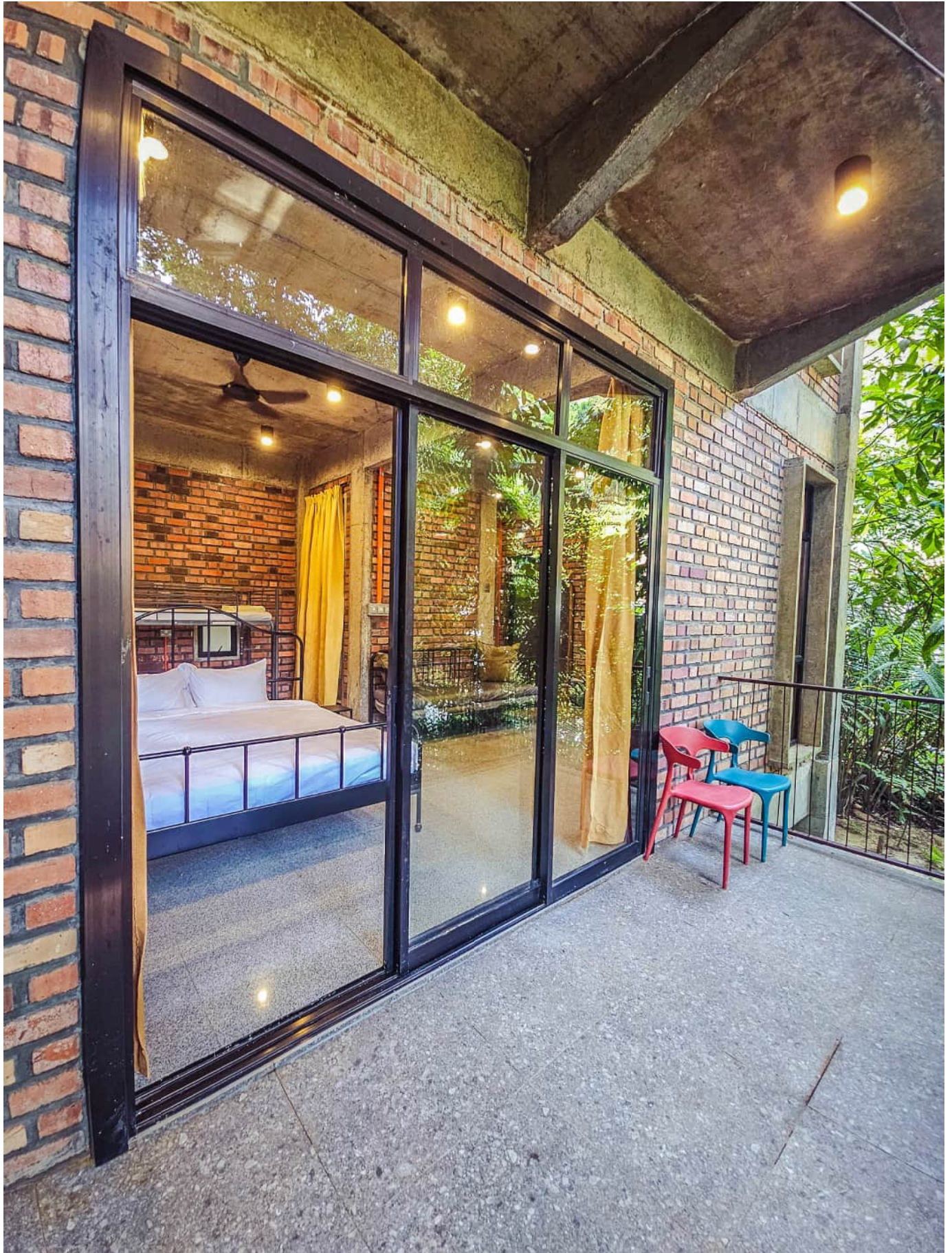


The bedroom on this floor has a high ceiling and is spacious.

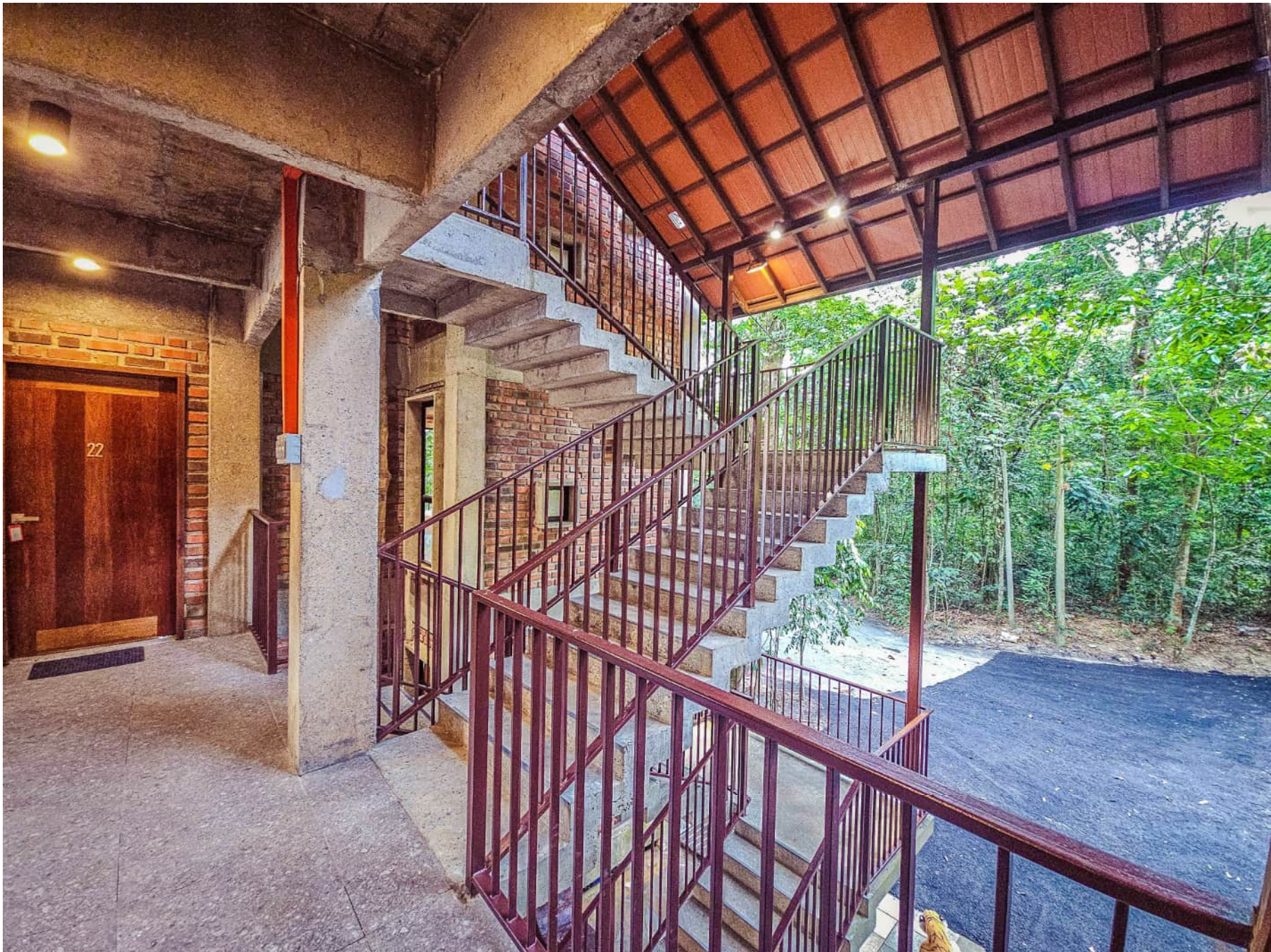


There is an attached bathroom with hot water shower. Guests in this bedroom does not need to climb any stairs.

Room is air-conditioned with ceiling fan



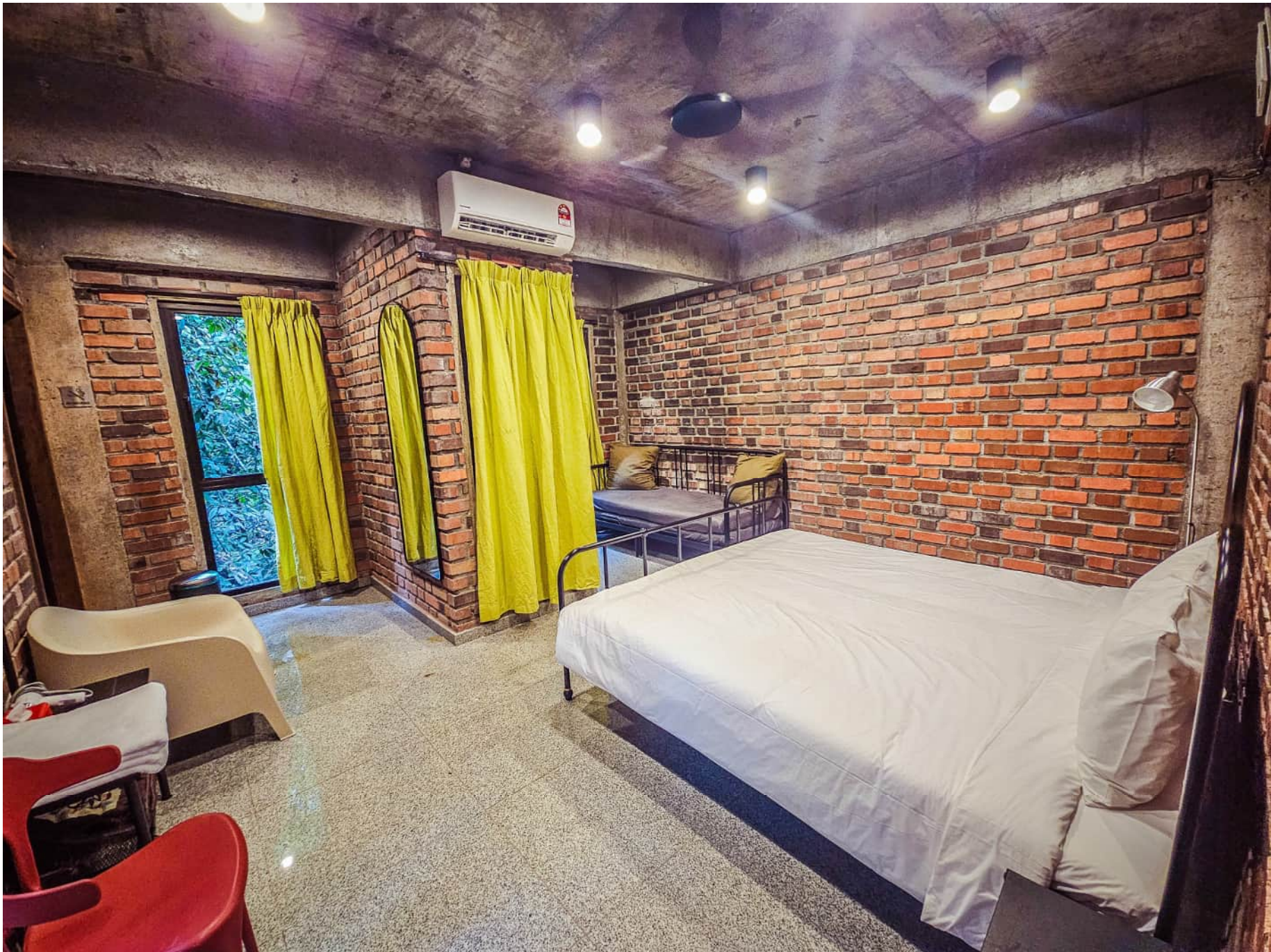
This bedroom has access to a private balcony via glass sliding doors.



The central staircase linking the upper bedrooms, hall and ground floor spaces



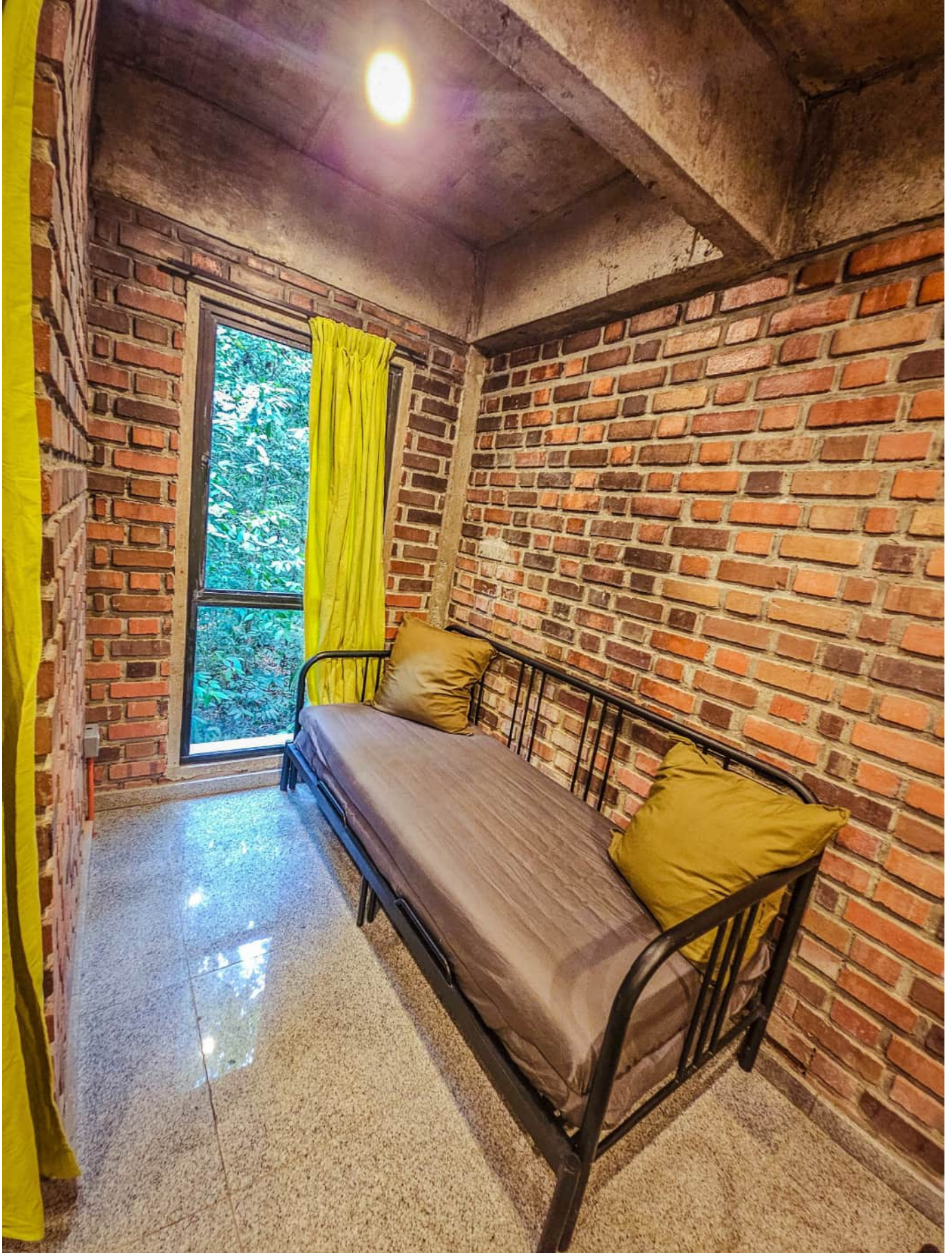
This is first floor corridor, Bedrooms 1, 2, 3 and 22 is located on this floor.



This is bedroom 1 on the first floor, with a king sized bed & sofa bed, with air conditioner & ceiling fan, an attached bathroom. It sleeps 2 to 4 pax



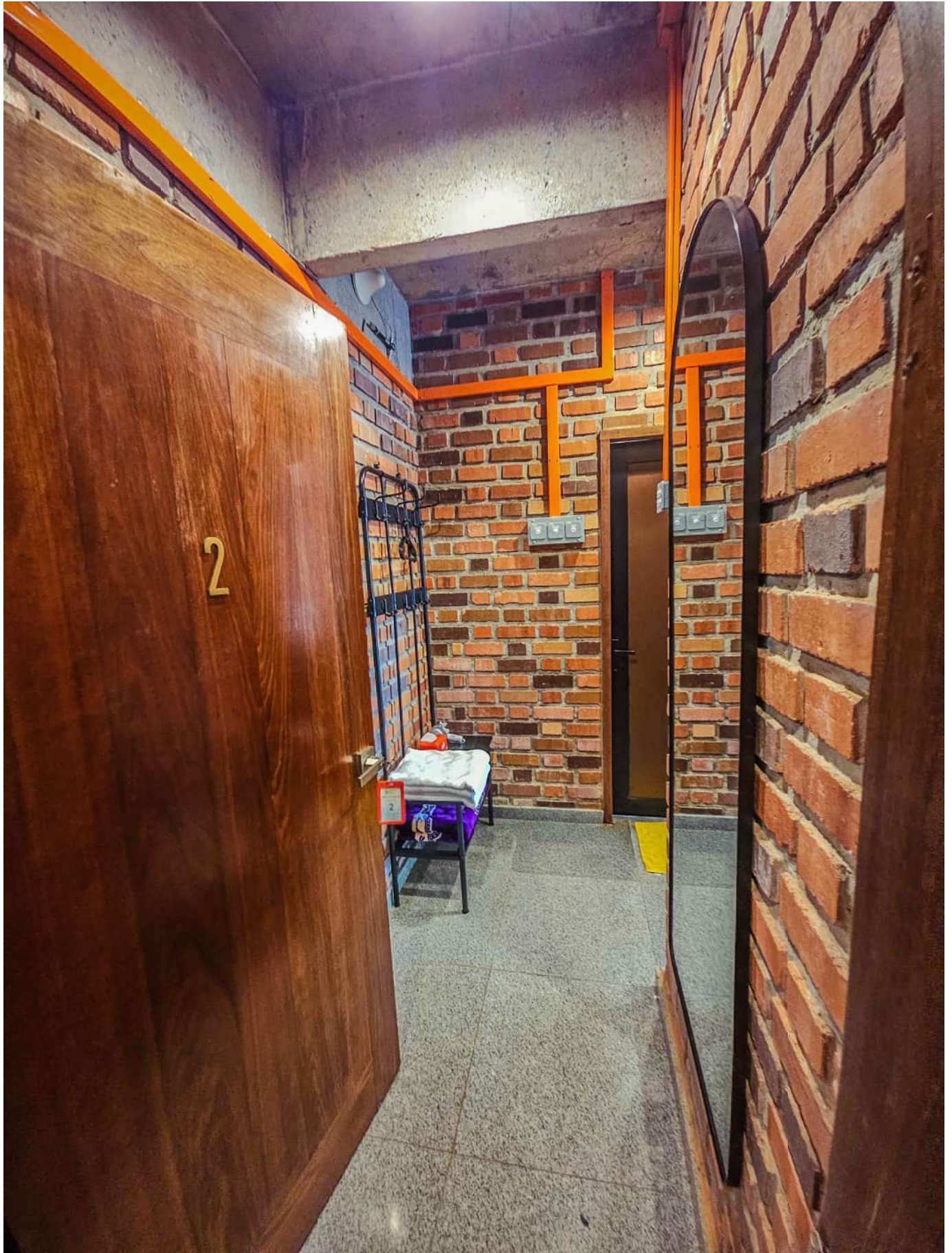
Every bedroom has a coat / towel hanger, that can hold your luggage / shoes too, hairdryer, facial tissue, fire extinguisher, hangers, prayer mat (sejadah & kiblat sign) is provided.



This sofa is 2 mattresses stacked, which can be converted into a bed for 1 or 2 persons



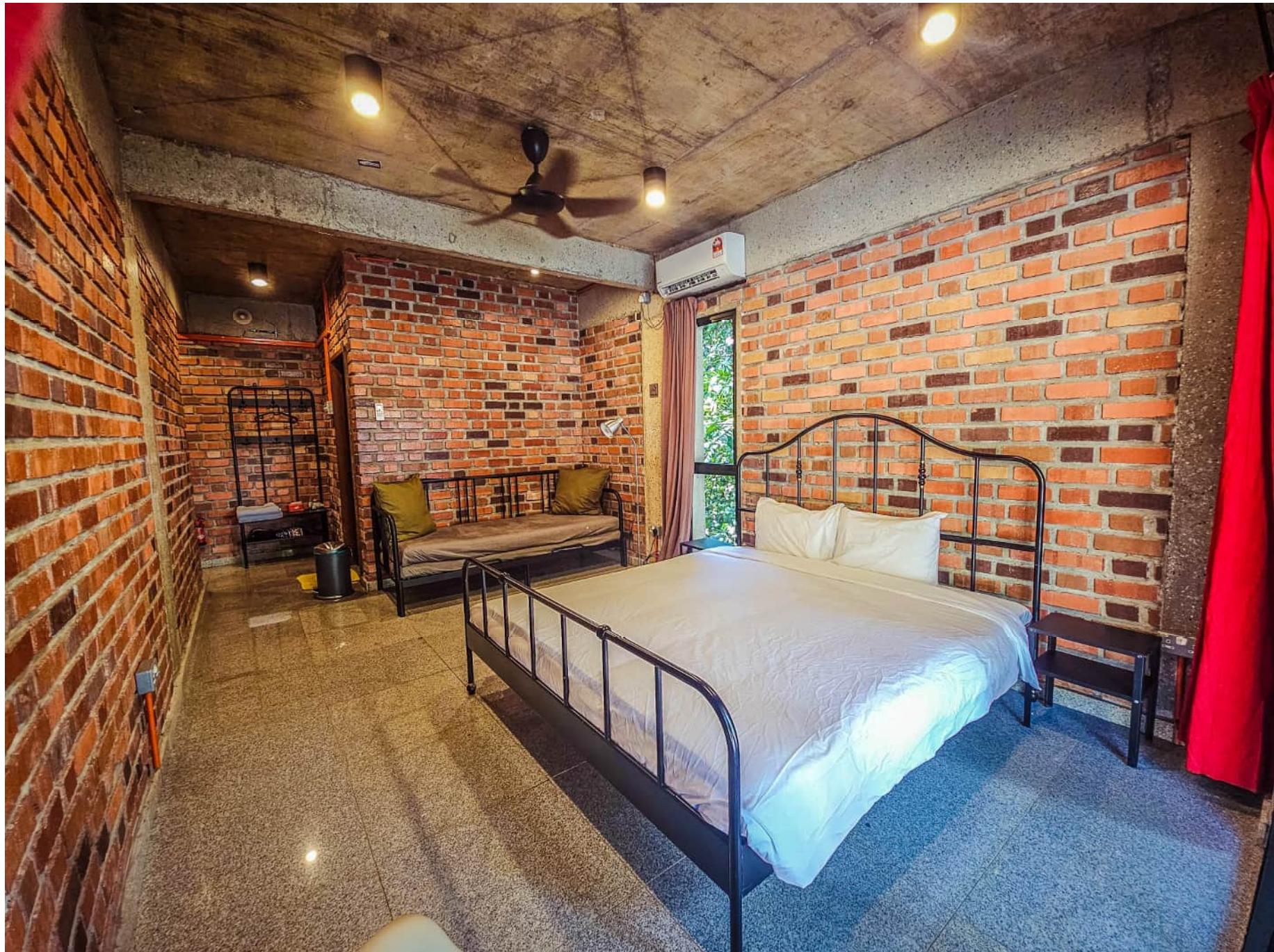
Bedroom 1



This is bedroom 2 on the first floor, which sleeps 2 to 4 pax.



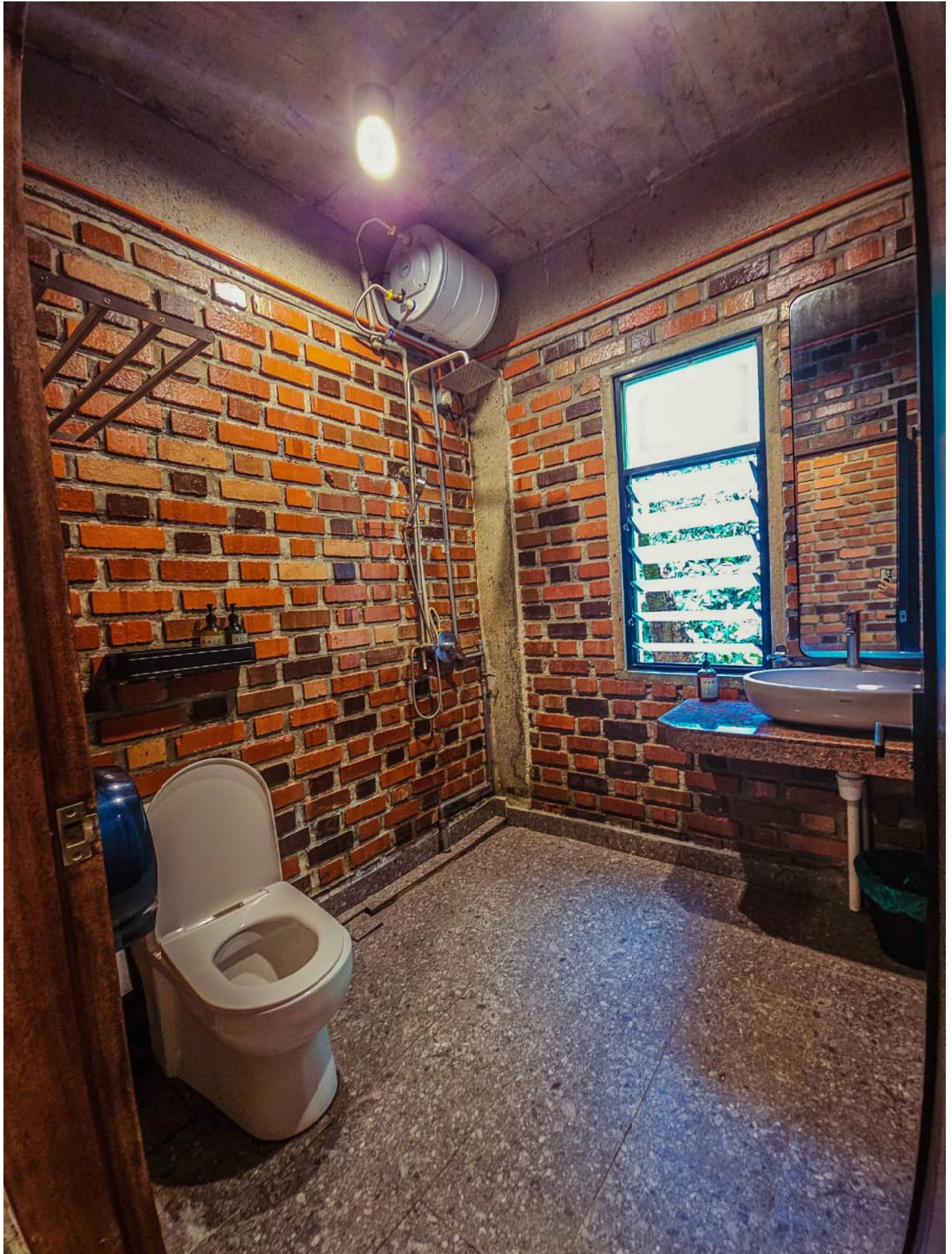
This is bedroom 2 on the first floor, with a king sized bed & sofa bed, with air conditioner & ceiling fan, an attached bathroom. It sleeps 2 to 4 pax



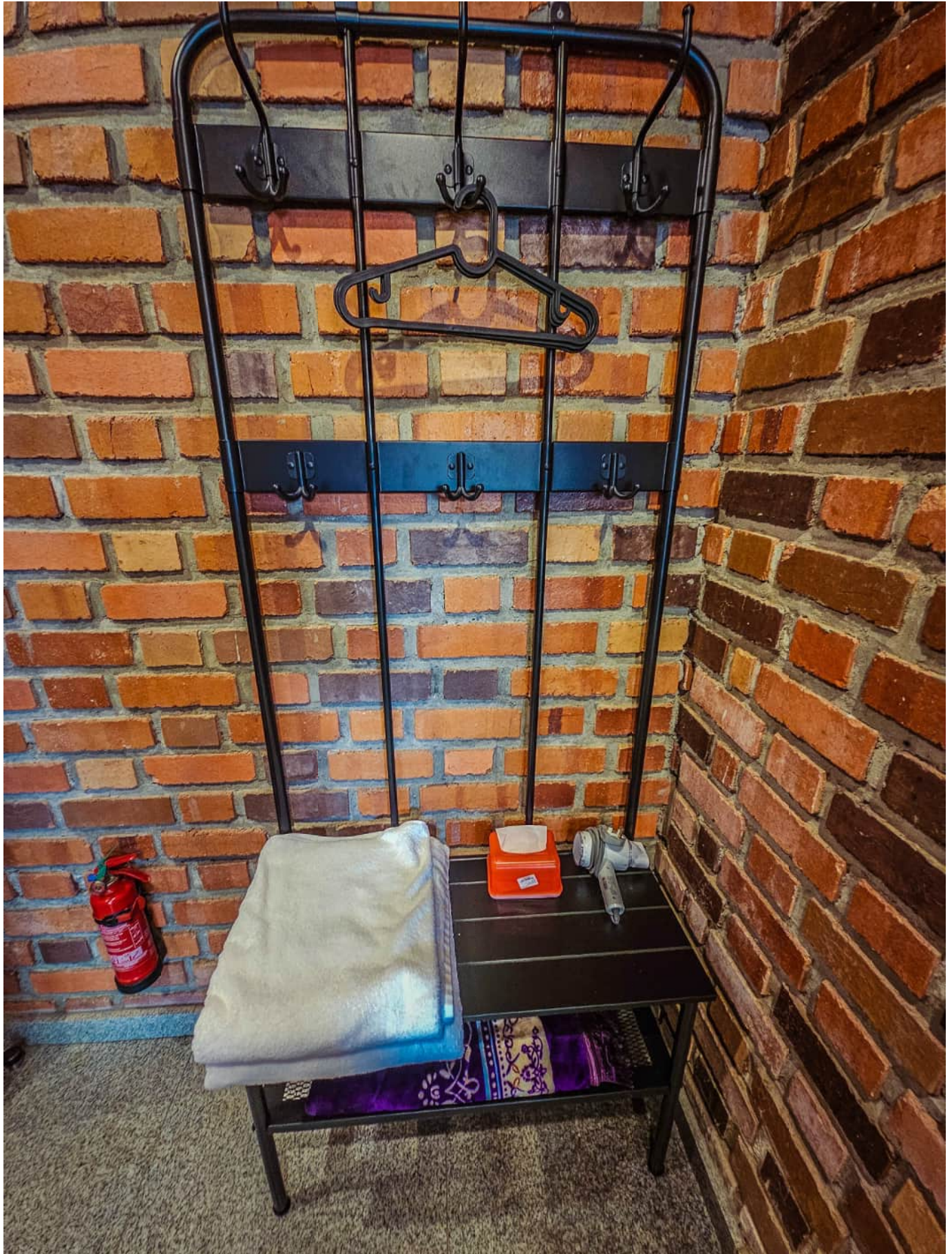
Bedroom 2



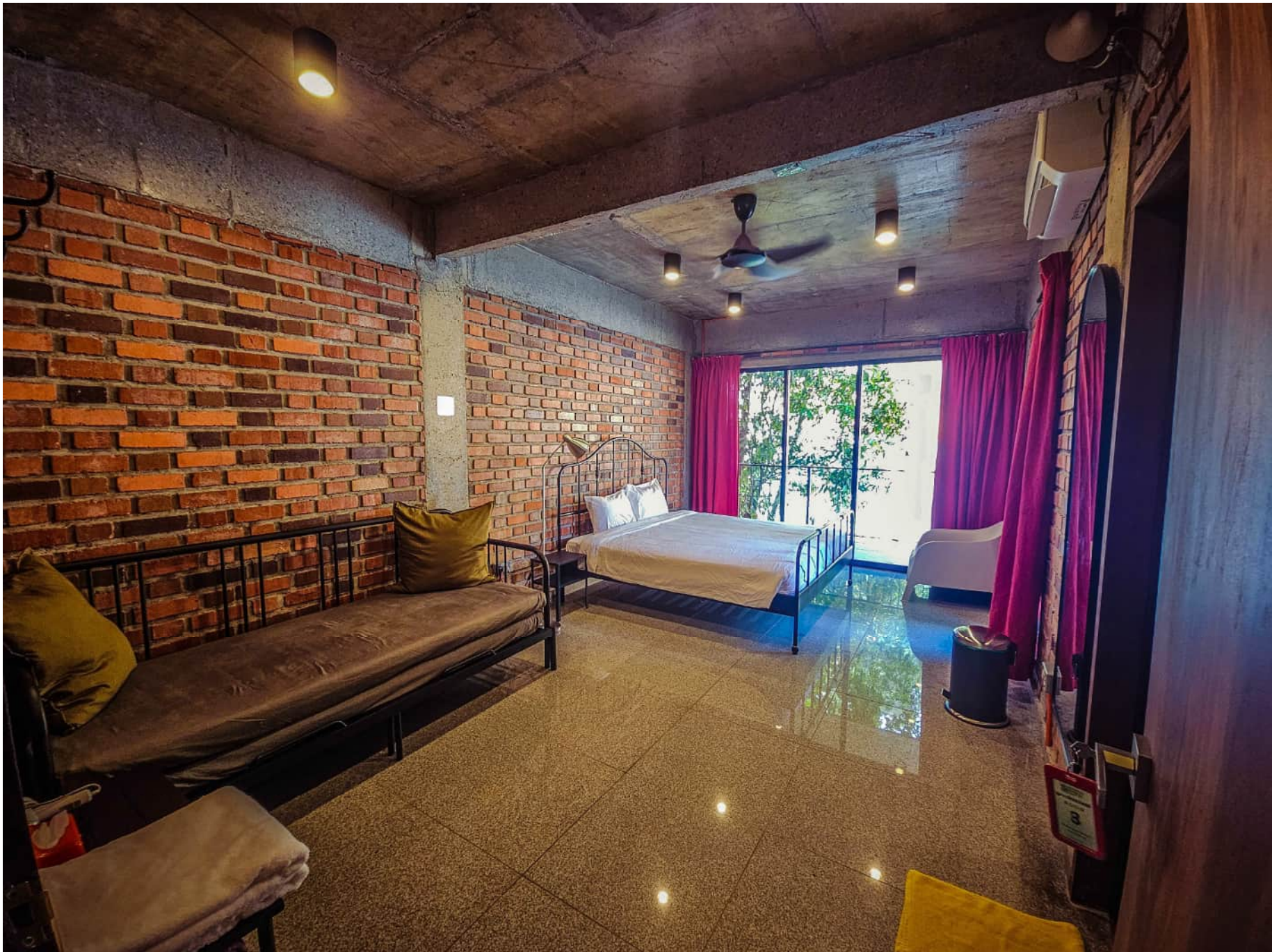
Bedroom 2 shares a common balcony with Bedroom 3, faces the forest on one side, River Selaru below, and ECRL construction directly opposite.



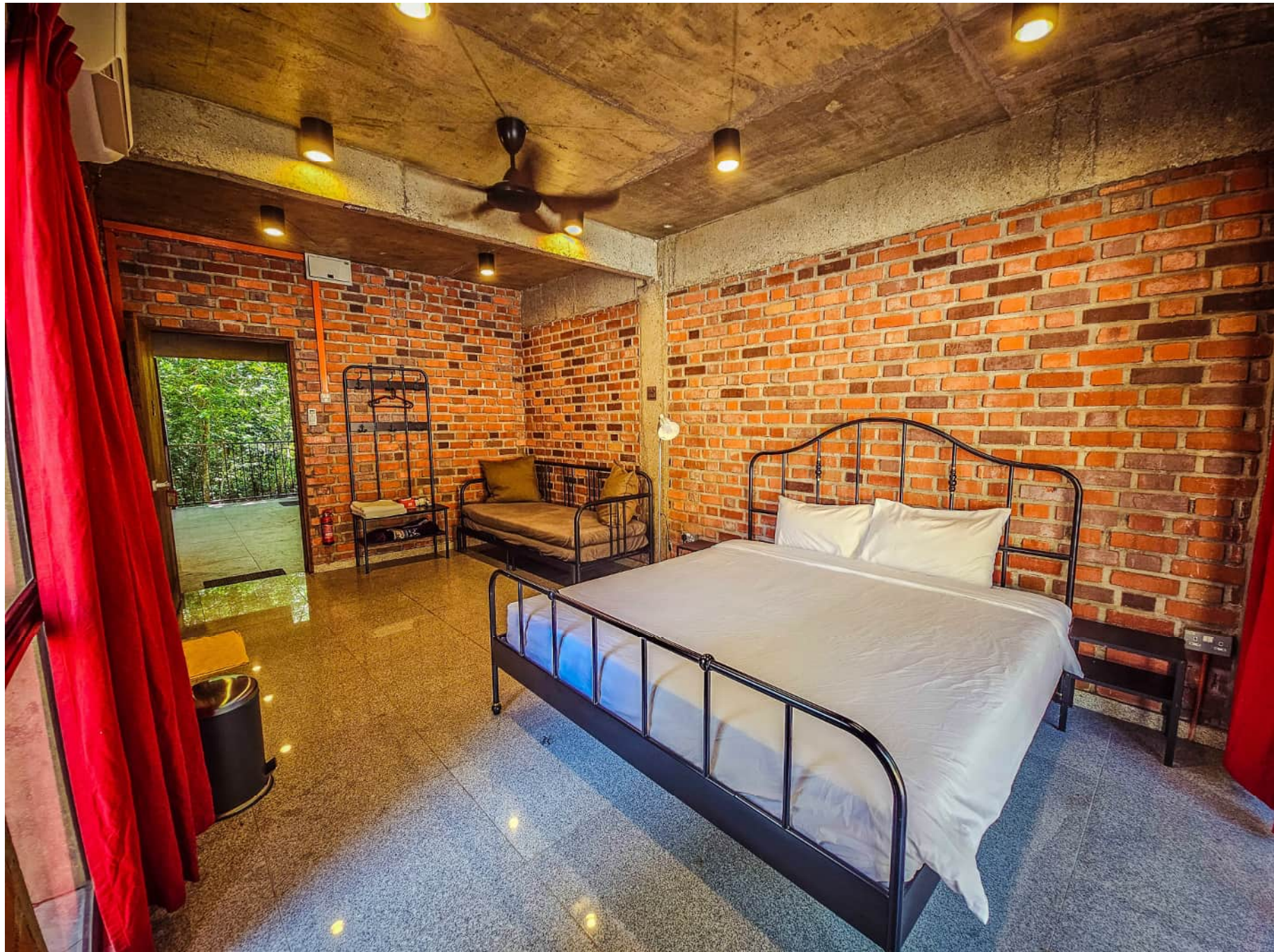
Bedroom 2's attached bathroom with hot water storage shower, with glass louvered windows to view the nature. Soap, shampoo and towel is provided. All bedrooms have an attached bathroom with the same facilities



Every bedroom has a coat / towel hanger, that can hold your luggage / shoes too, hairdryer, facial tissue, fire extinguisher, hangers, prayer mat (sejadah & kiblat sign) is provided.



This is bedroom 3 on the first floor, with a king sized bed & sofa bed, with air conditioner & ceiling fan, an attached bathroom. It sleeps 2 to 4 pax



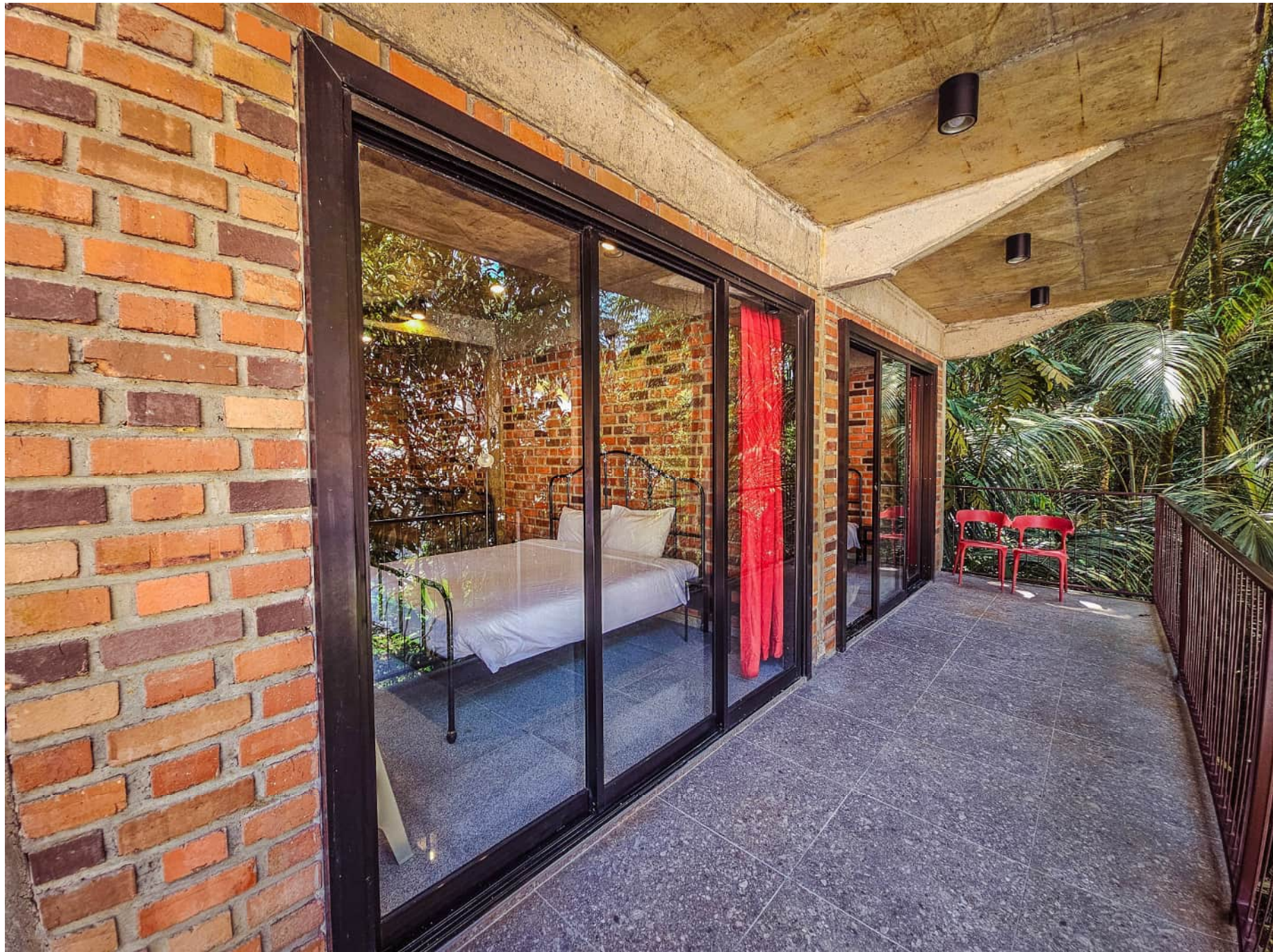
Bedroom 3



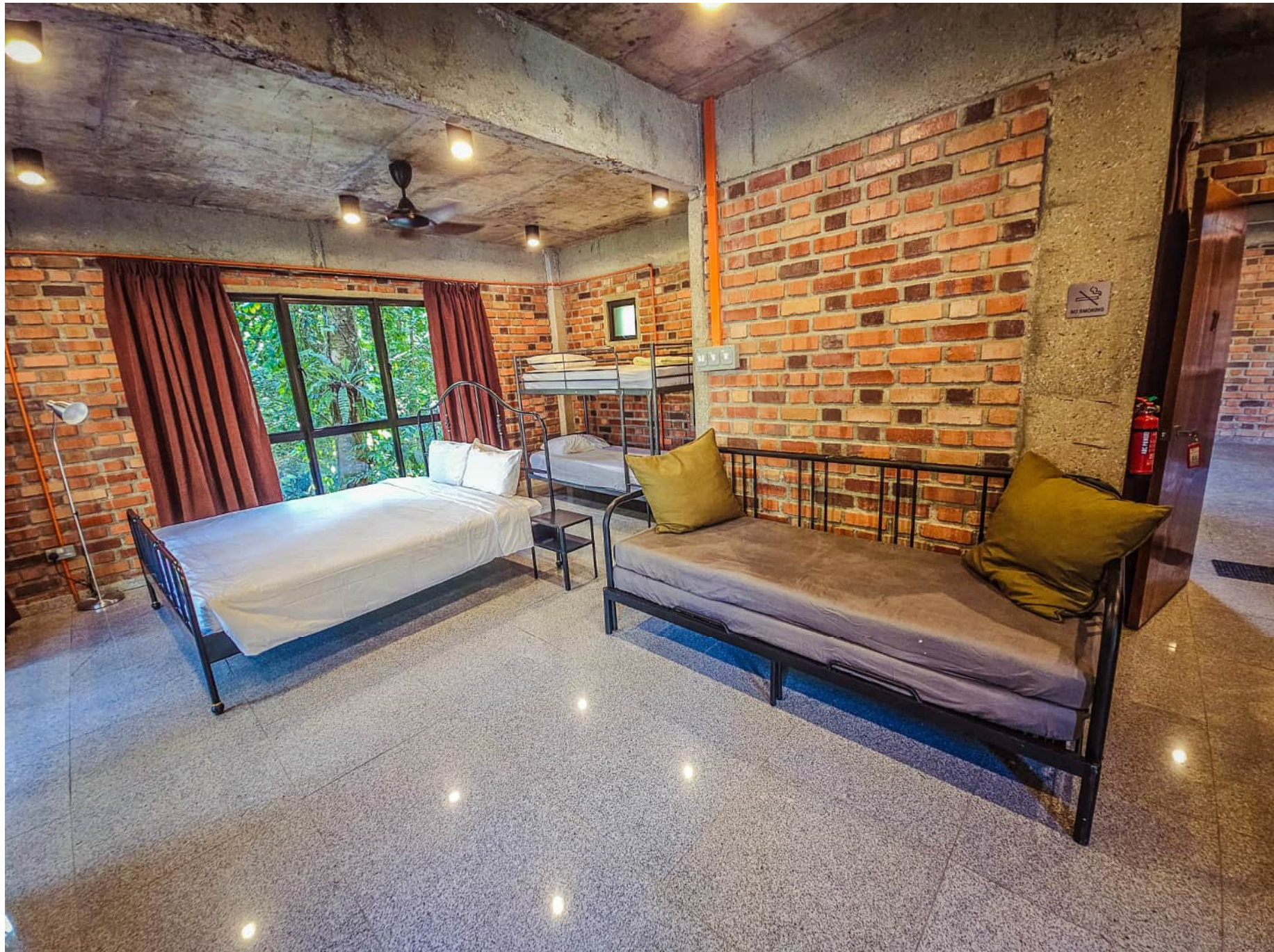
Every bedroom has a coat / towel hanger, that can hold your luggage / shoes too, hairdryer, facial tissue, fire extinguisher, hangers, prayer mat (sejadah & kiblat sign) is provided.



Bedroom 3's attached bathroom with hot water storage shower, with glass louvered windows to view the nature. Soap, shampoo and towel is provided. All bedrooms have an attached bathroom with the same facilities



Bedroom 3 shares a common balcony with Bedroom 2, faces the forest on one side, River Selaru below, and ECRL construction directly opposite.



*This is bedroom 22 on the first floor, with a king sized bed, bunk bed and sofa bed, with air conditioner & ceiling fan, an attached bathroom.
It sleeps 2 to 6 pax.*



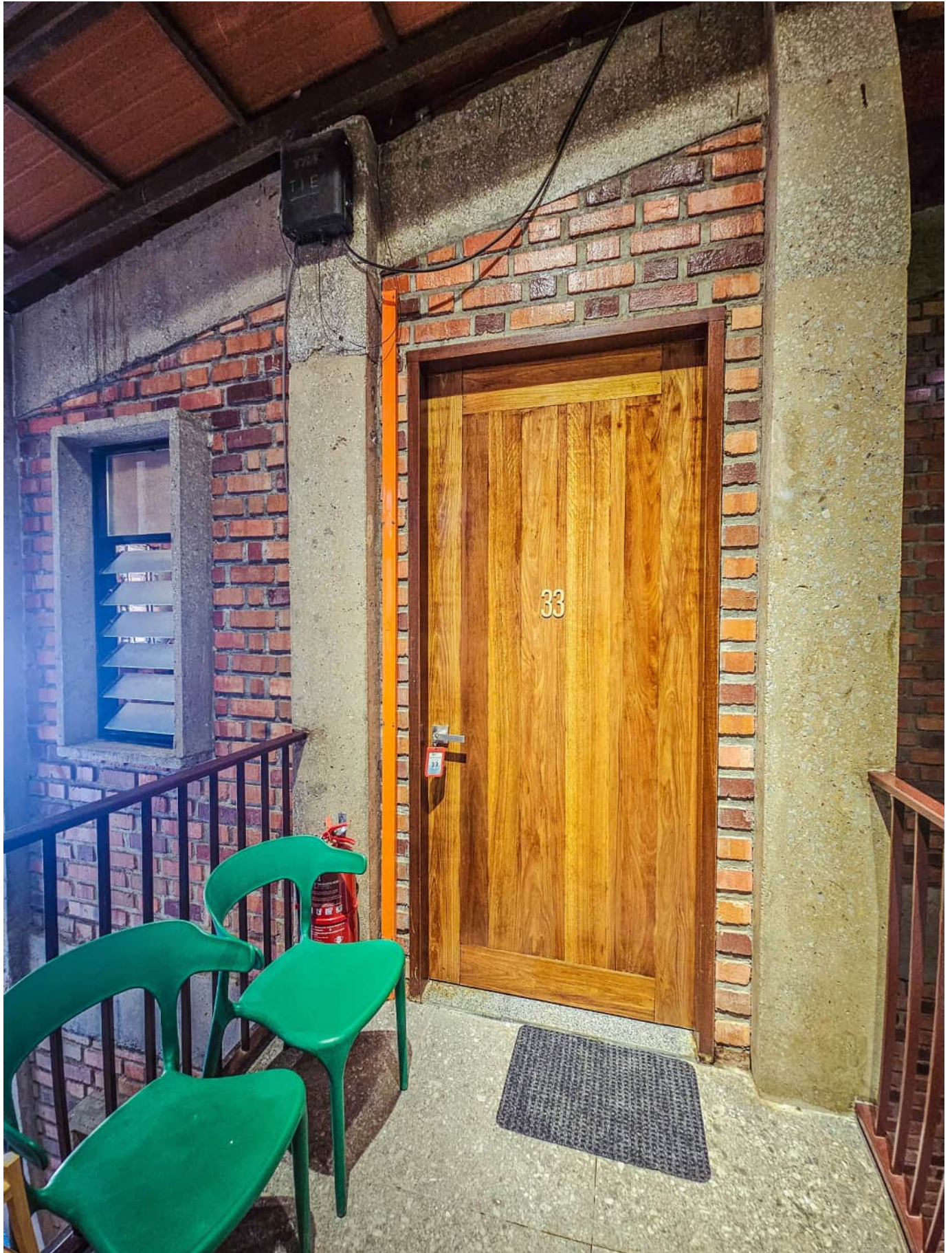
The king sized bed faces the balcony with views of the forest.



Bunk bed



Bedroom 22



Bedroom 33 sleeps 2 to 6 pax, is on the topmost floor, beside the indoor living hall.



Bedroom 33



This is bedroom 33 on the second / top floor, with a king sized bed, bunk bed and sofa bed. It sleeps 2 to 6 pax.



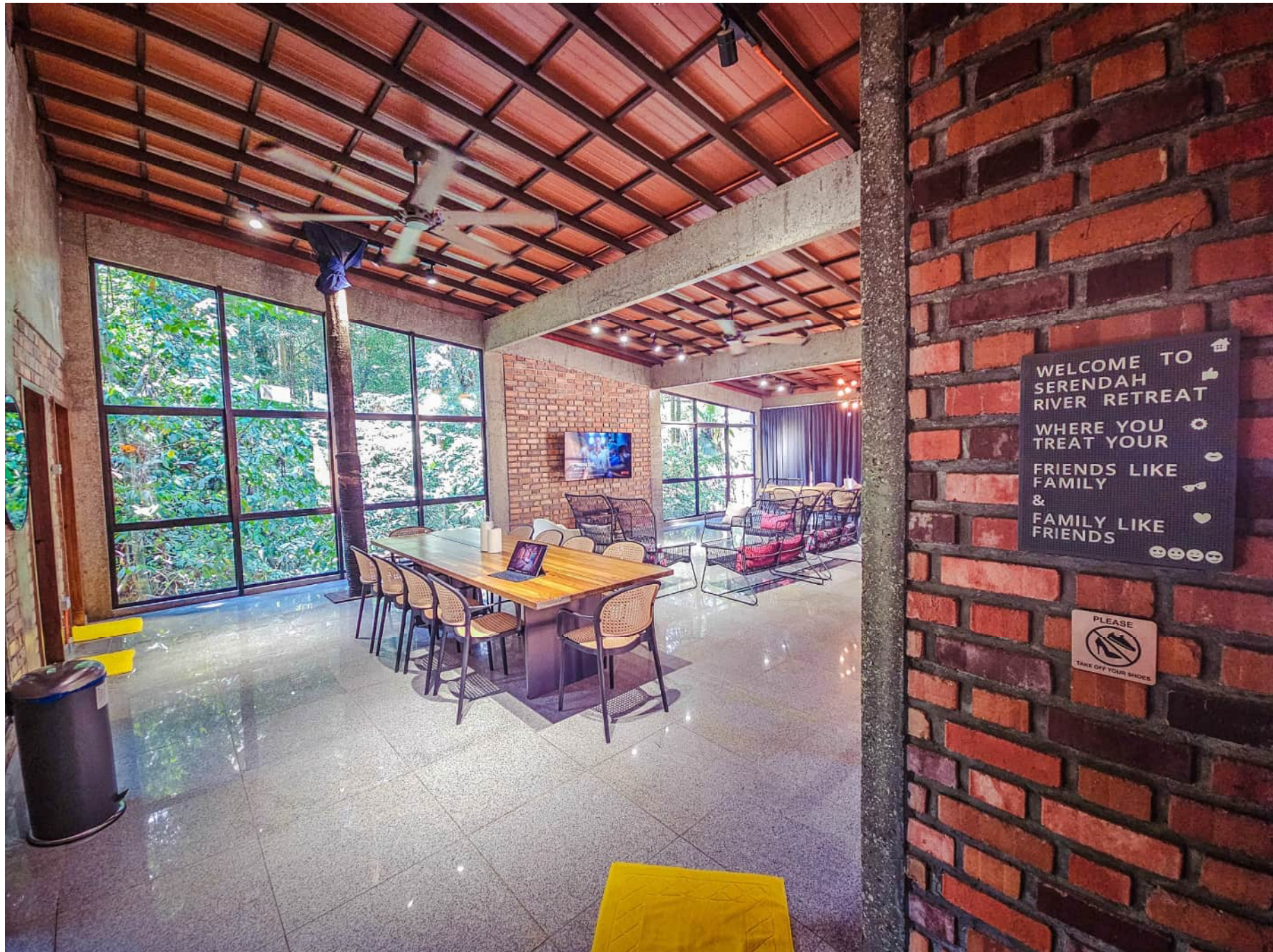
This is bedroom 33 on the second / top floor, with a king sized bed, bunk bed and sofa bed. It sleeps 2 to 6 pax.



This bedroom has access to a private balcony via glass sliding doors.



Bedroom 33's attached bathroom with hot water storage shower, with glass louvered windows to view the nature. Soap, shampoo and towel is provided. All bedrooms have an attached bathroom with the same facilities



Hall at the topmost floor



There is a large 65" TV that guests can use to watch Netflix / Youtube with a bluetooth soundbar, with HDMI cable for projecting materials.

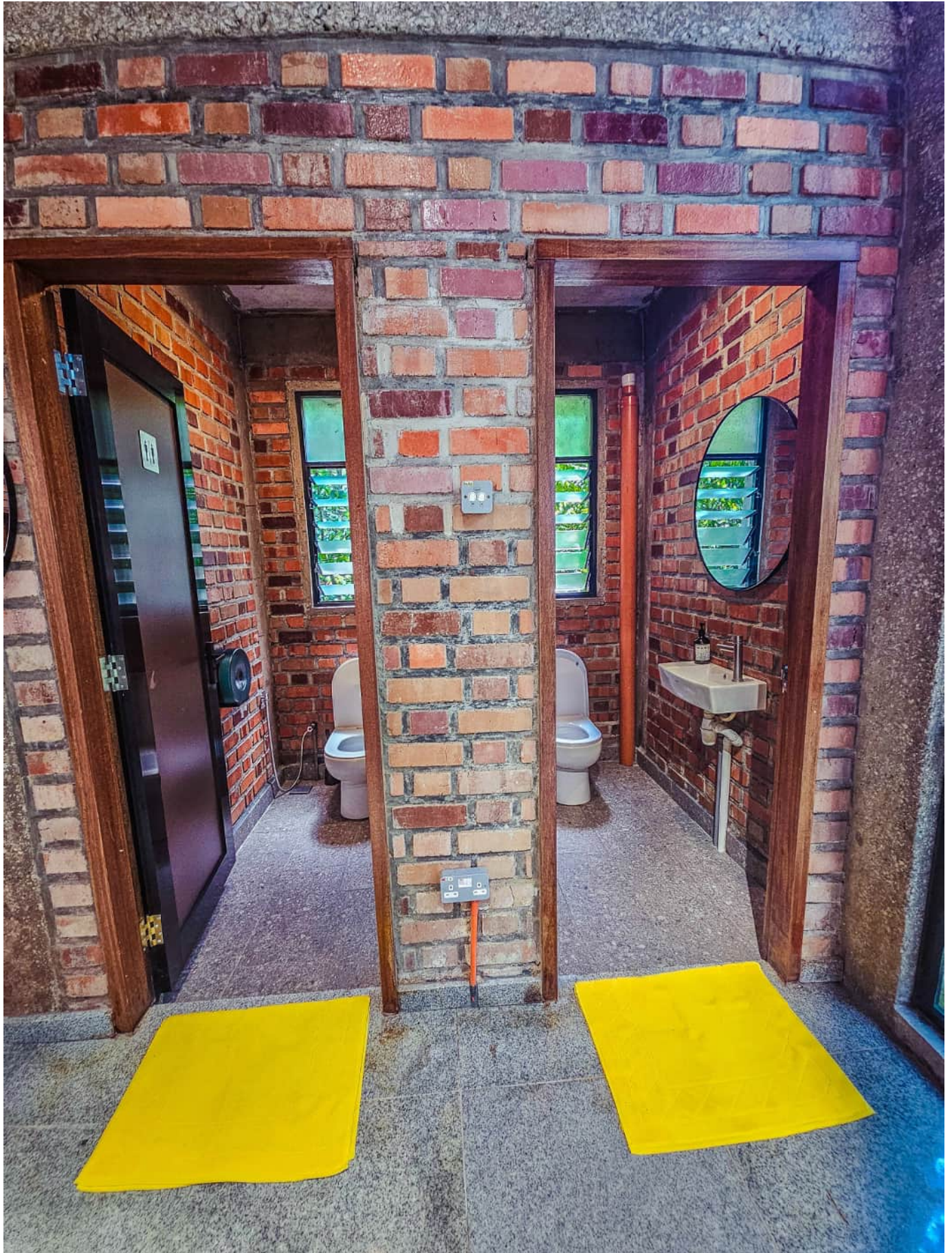
WiFi is available.



Carrom available



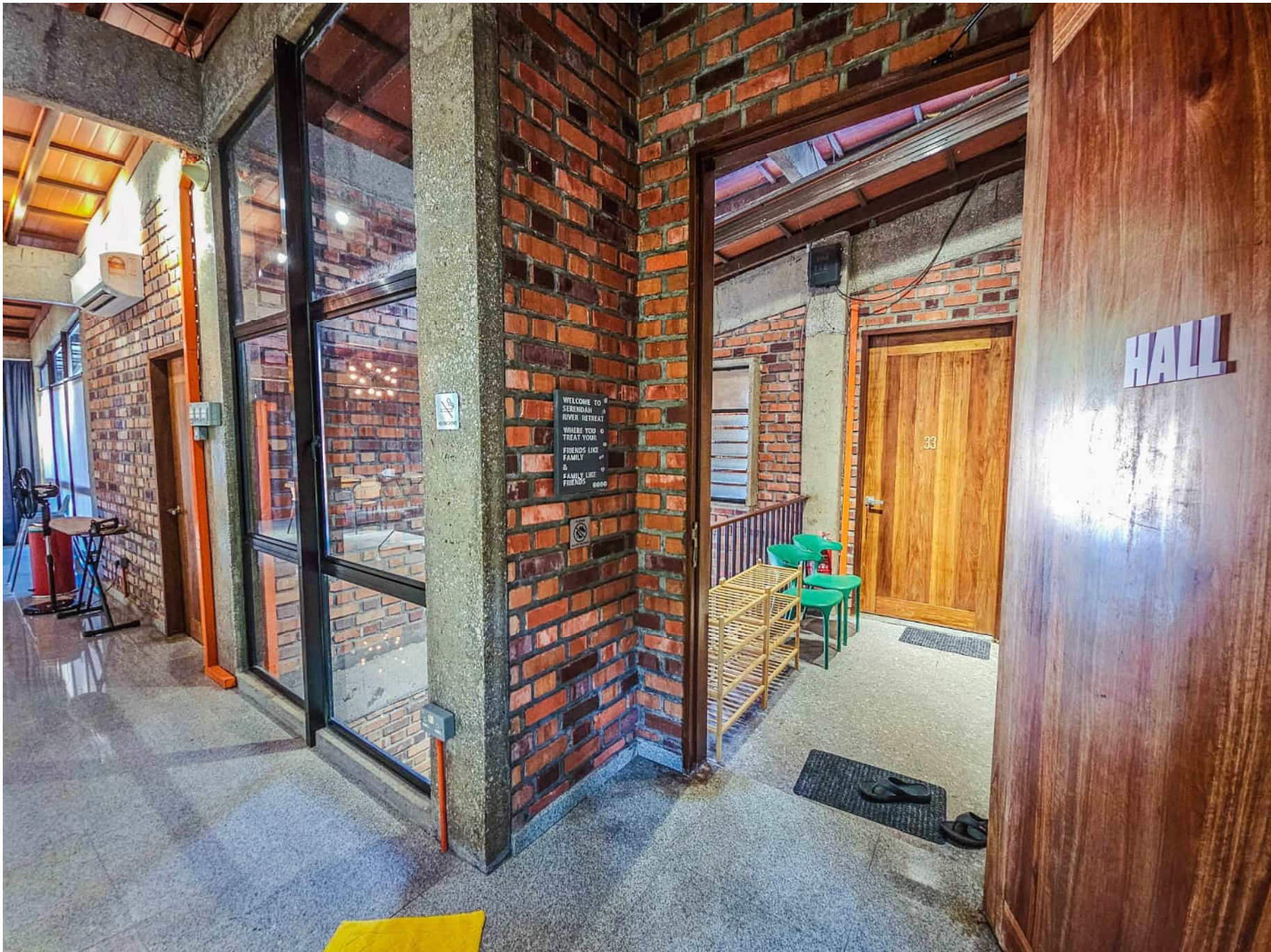
In addition to the aircon, there are two huge ceiling fans in the hall to keep the guests cool throughout use of the hall.



The hall has 2 powder rooms.



In addition to the aircon, there are two huge ceiling fans in the hall to keep the guests cool throughout use of the hall.



At the entrance of the hall, there are chairs and shoe / slipper racks

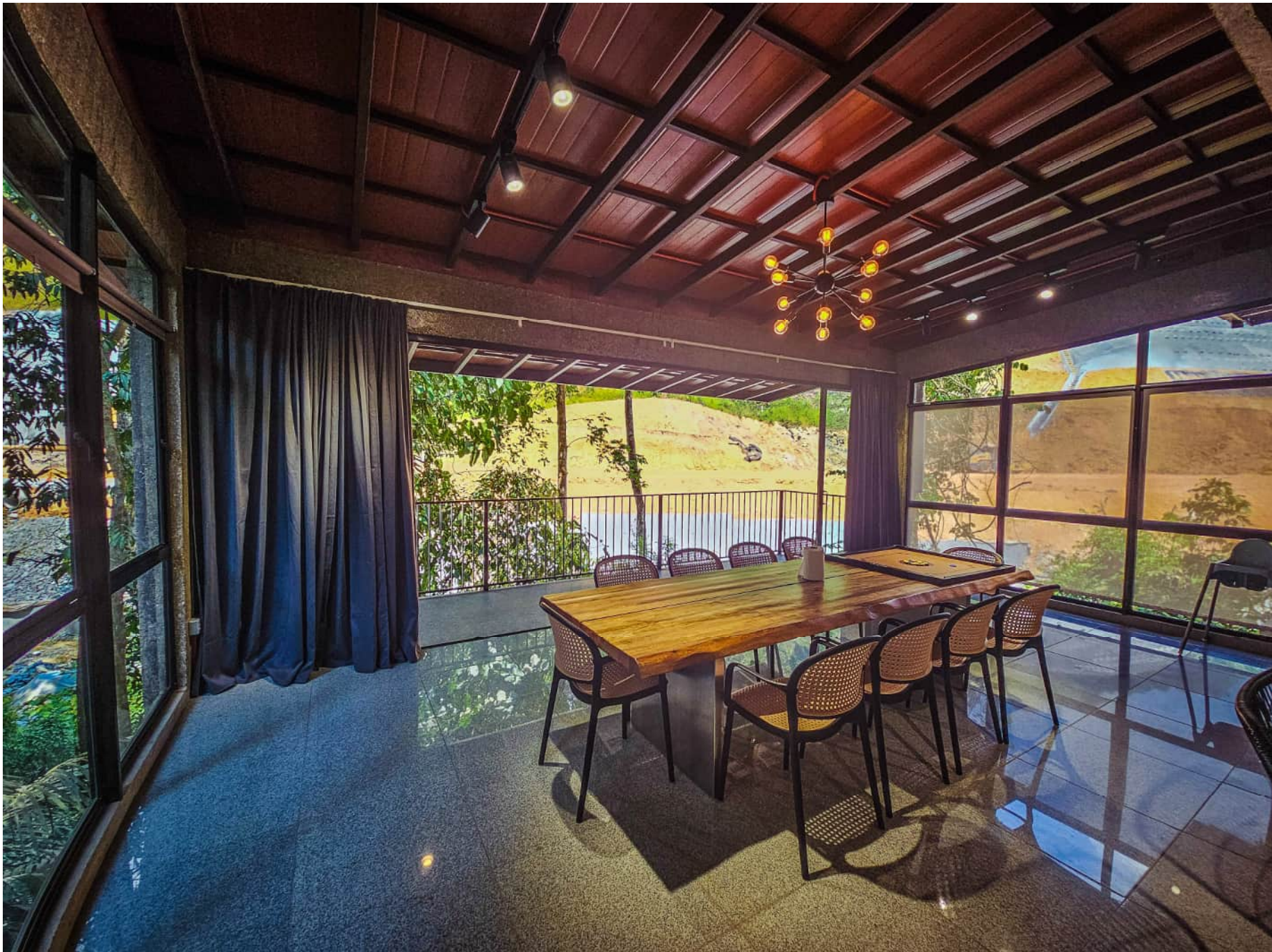




Balcony has 6m length glass sliding doors which opens up to absorb the outdoor views. Curtain also provided for privacy / keep the sunlight glare to a minimum. There is a view of the ECRL construction of train tracks directly opposite, with forest views around, river view below.



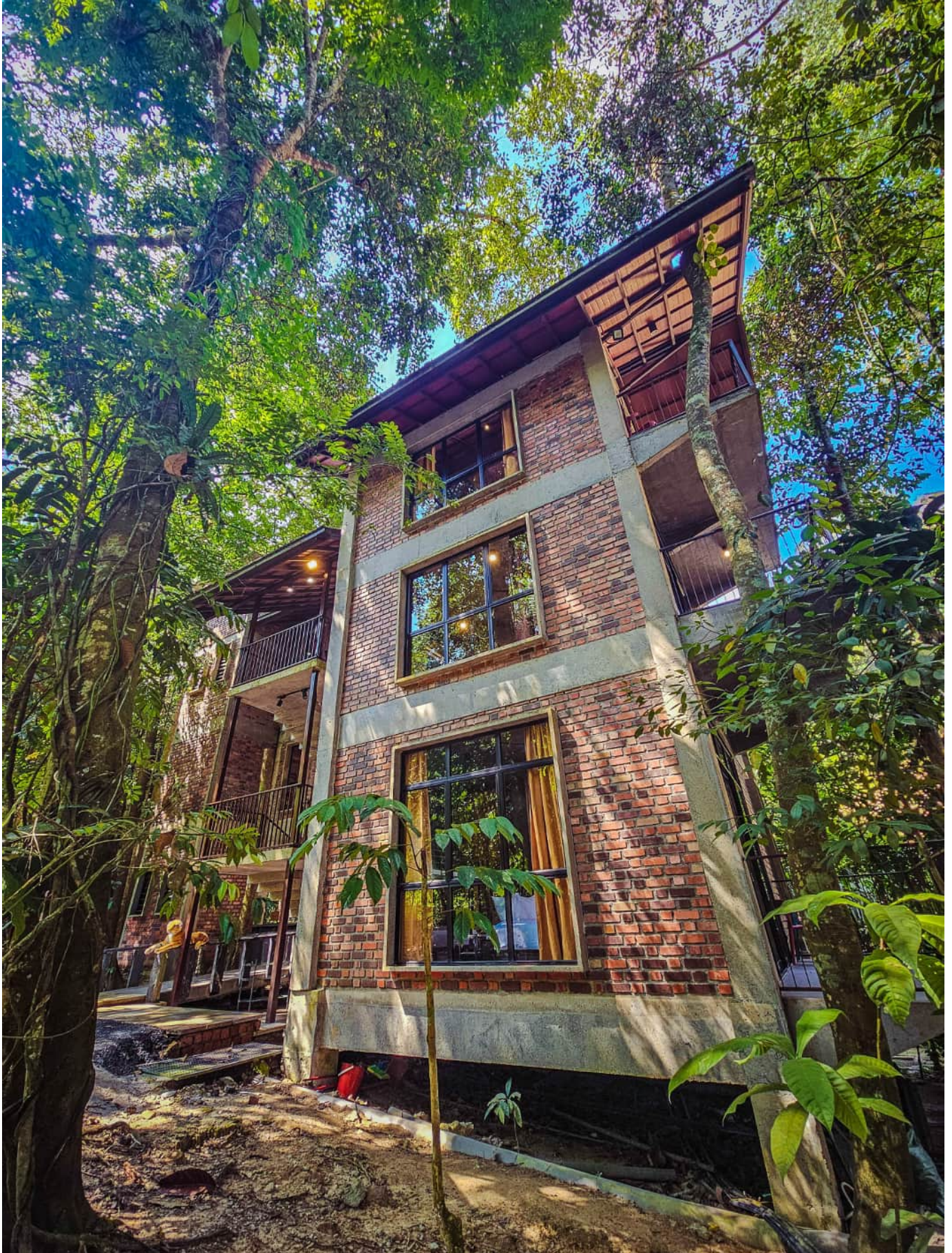
Balcony has 6m length glass sliding doors which opens up to absorb the outdoor views. Curtain also provided for privacy / keep the sunlight glare to a minimum. There is a view of the ECRL construction of train tracks directly opposite, with forest views around, river view below.



Balcony has 6m length glass sliding doors which opens up to absorb the outdoor views. Curtain also provided for privacy / keep the sunlight glare to a minimum. There is a view of the ECRL construction of train tracks directly opposite, with forest views around, river view below.



Balcony has 6m length glass sliding doors which opens up to absorb the outdoor views. Curtain also provided for privacy / keep the sunlight glare to a minimum. There is a view of the ECRL construction of train tracks directly opposite, with forest views around, river view below.



This entire block shown here are bedrooms 11, 22 & 33, with private balconies



Enjoy your private gathering by the riverside, in the midst of the forest with all the modern amenities (air-conditioned bedrooms, WiFi, hot water showers, filtered drinking water, etc)