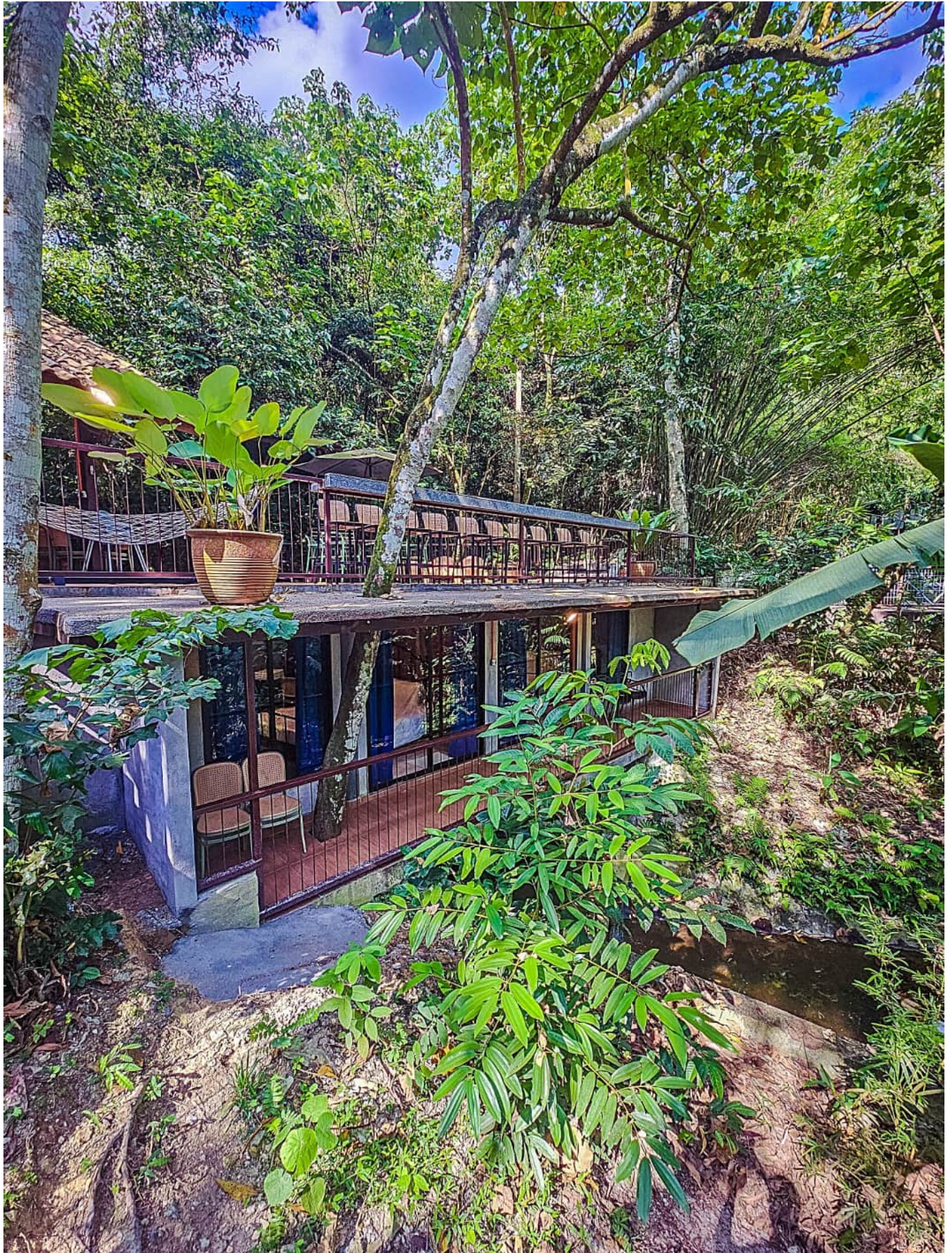




Cottage is built partially over a valley, around existing forest trees that helps provide natural shade, and a forest living environment.



*A hammock, bar table and chairs are located on the deck overlooking the valley.
Two air-conditioned bedrooms (room 4 & 5) are located under deck.*



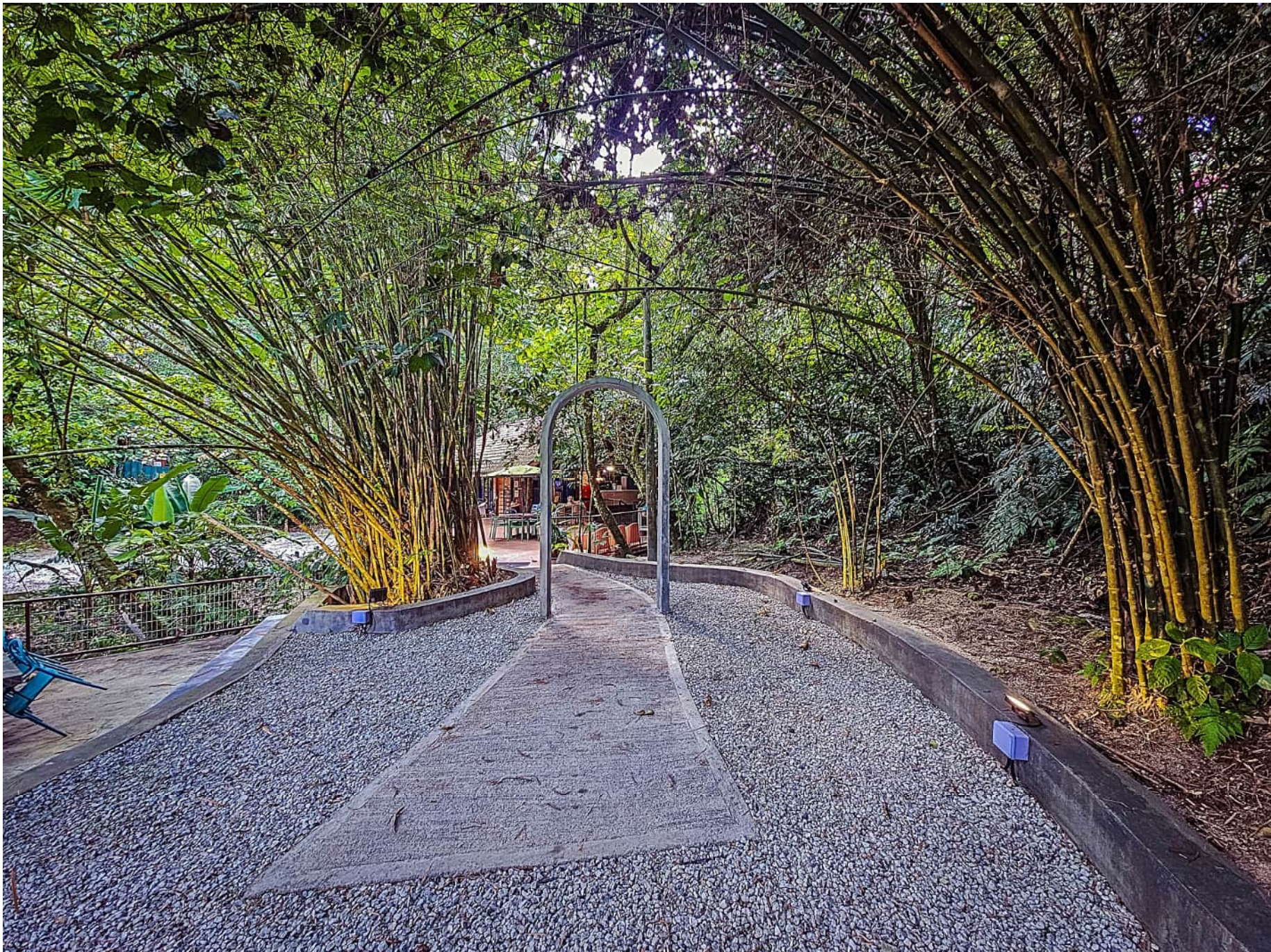
Notice the many existing forest trees puncturing the deck at various areas, helping to provide shade.



Cottage has an air-conditioned living room / hall which also doubles up as a meeting space / dining area to guests' preference.
 Long table is hardwood and can sit 16pax comfortably. There are other lounge seats too. 65" smart TV has HDMI input, can play YouTube or Netflix.



There are two entrances to the Cottage, this is the disabled / elderly friendly ramped entrance which you can park directly beside.



Gentle ramp pathway leading to the Cottage



Ramp leads to the outdoor deck



The shaded BBQ pit is located on the deck, with lights for BBQ throughout the night. BBQ facilities provision: charcoal, firestarters, satay fan, foil, tongs, lighters.
 There is a wash basin adjacent. Photo shows the waterguns provided to chase any monkeys that visit.



There is a hammock on the deck, the stairs shown is the secondary entrance via carpark below.



There are several areas that you can have your meals on the deck which is shaded by the trees above. You are surrounded by trees during your stay.



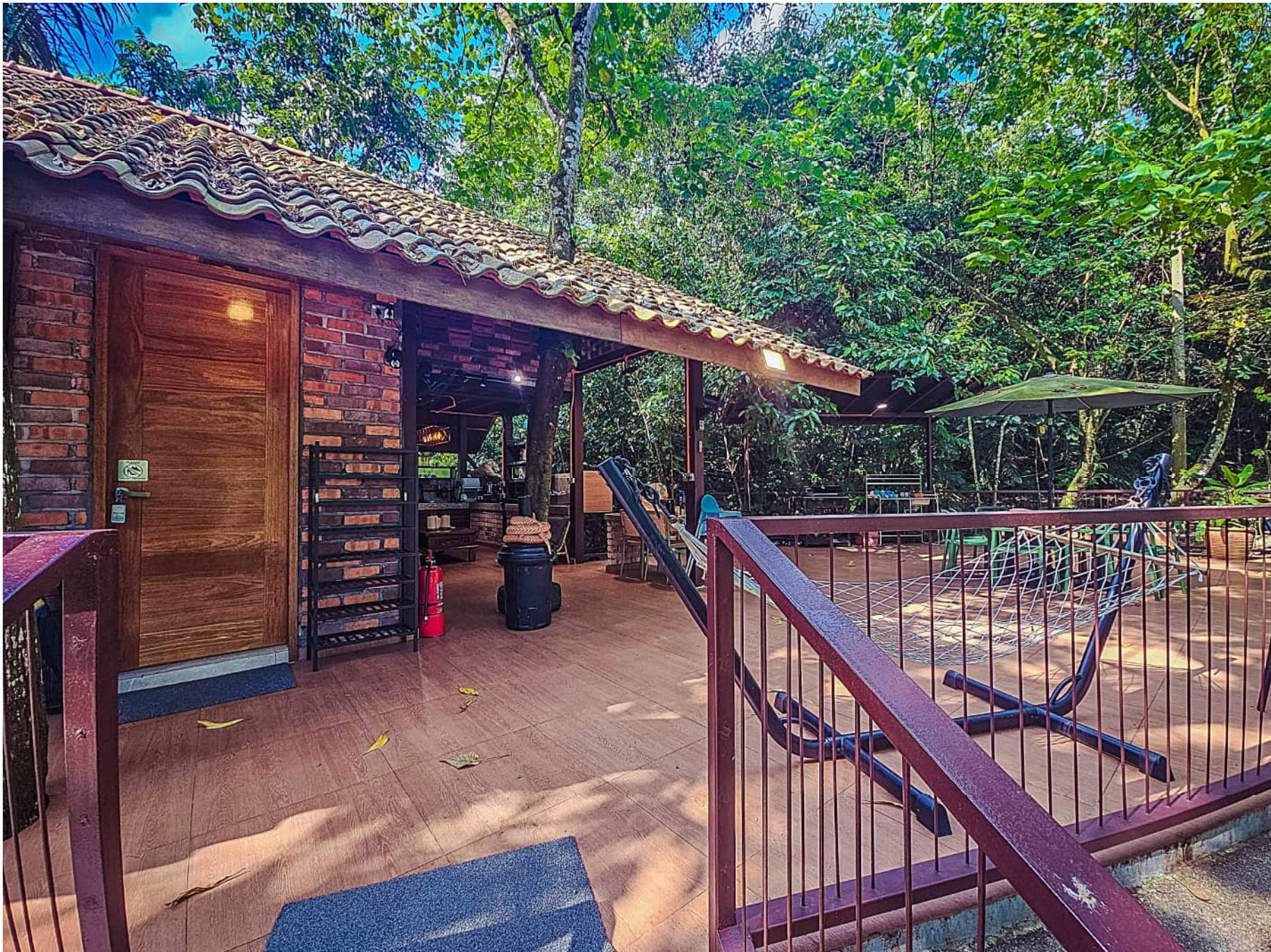
There are some tiger dolls provided, which helps to deter monkeys from visiting and guests can use it to chase monkeys away by moving it. For guests that forget to bring slippers, you may find some in the cupboard here.



As you are in the forest, some mosquitoes are to be expected. For this, we provide the following: Mosquito coils, lighter, mosquito body spray repellent, mosquito aerosol, UV lamp trap throughout our property.



About 6 cars can park here, directly in front of the Cottage.



View of the deck and main entrance door, as guests walk up the stair entrance.



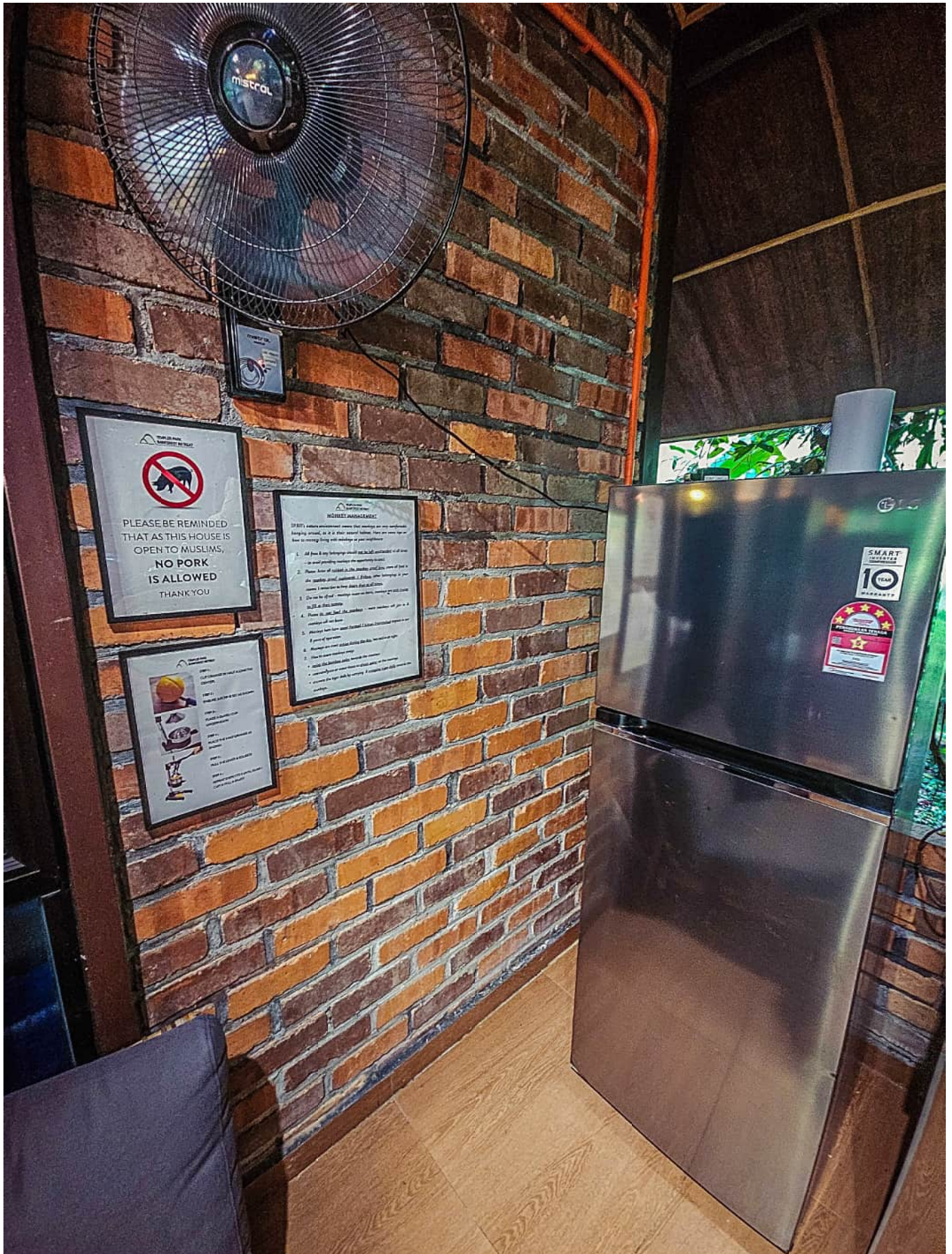
The kitchen area is located on the deck, outdoors. Notice the toy snake on the red cupboard, it helps to deter monkey visits.



The kitchen area is located on the deck, outdoors. See the tiger dolls guarding the space.



Two set of cupboards, The cupbaord on the left has: bread, butter, jam, eggs, oranges, first aid kit, mosquito coils & repellent, BBQ bamboo skewers, foil, firestarters, lighters, steamboat pot, blender, pestle mortar, condiments, etc. Whilst the cupboard on the right, is empty to store your own dry kitchen items.



*There is a fridge and freezer to store your cold or frozen items.
Pork is strictly not allowed in this house, as it is a muslim friendly kitchen.*



There is a hot drinks dispenser, cold and hot water dispenser too, so you can consume and enjoy here.



Cups, bowls, plates, cutleries are provided. Several gas stoves with pots and pans, kuali located here for your cooking use. Sabun samak also provided.



Also, we provide rice cooker, microwave oven, oven, toaster, hot water kettle and fresh juice presser (to make fresh orange juice from the provided oranges)

shared facility



Infinity pool is 4 feet deep with a 2 feet deep zone for kids / babies. The pool water like a mirror, reflects the surrounding nature & is finished with nature toned granite tiles. Please note this pool is shared with Villa & Container (two other houses in the compound).

shared facility

COTTAGE



There is a jacuzzi corner where u can get your back massaged in the main pool.

Please note pool is shared



The indoor airconditioned living hall / meeting space / dining area - guests can sit around this beautiful long wooden table.
 The 65" smart TV has Netflix or Youtube, and we have a long HDMI cable available for you to set up presentations on your laptop. Whiteboard is available upon request.



The indoor airconditioned living hall / meeting space / dining area - guests can sit around this beautiful long wooden table.
 The 65" smart TV has Netflix or Youtube, and we have a long HDMI cable available for you to set up presentations on your laptop. Whiteboard is available upon request.



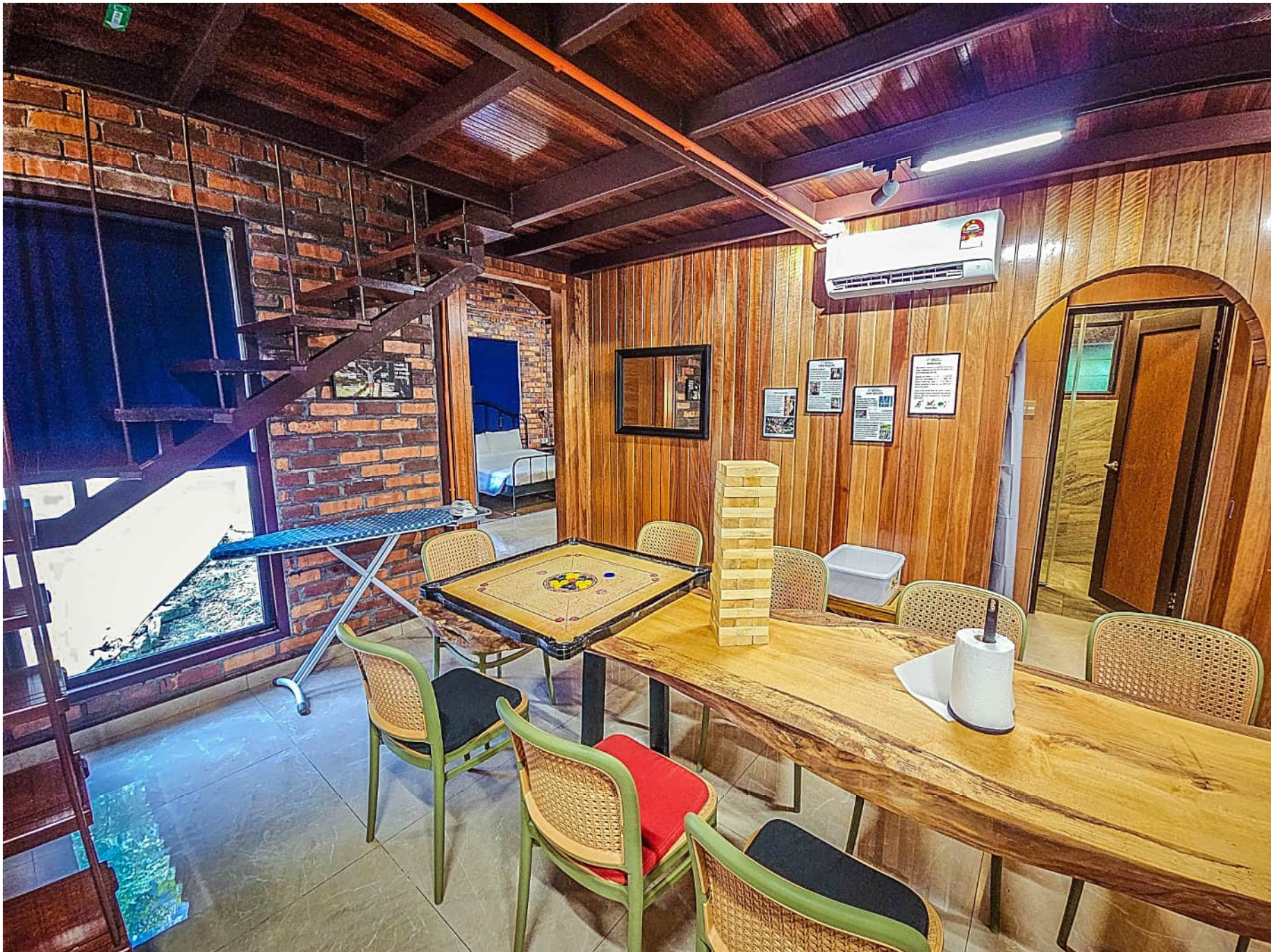
The indoor airconditioned living hall / meeting space / dining area - guests can sit around this beautiful long wooden table.
 The 65" smart TV has Netflix or Youtube, and we have a long HDMI cable available for you to set up presentations on your laptop. Whiteboard is available upon request.



The indoor airconditioned living hall / meeting space / dining area - guests can sit around this beautiful long wooden table.
 The 65" smart TV has Netflix or Youtube, and we have a long HDMI cable available for you to set up presentations on your laptop. Whiteboard is available upon request.



The indoor airconditioned living hall / meeting space / dining area - guests can sit around this beautiful long wooden table.
 The 65" smart TV has Netflix or Youtube, and we have a long HDMI cable available for you to set up presentations on your laptop. Whiteboard is available upon request.



There is giant jenga and carrom available. Iron and Ironboard is also provided here.



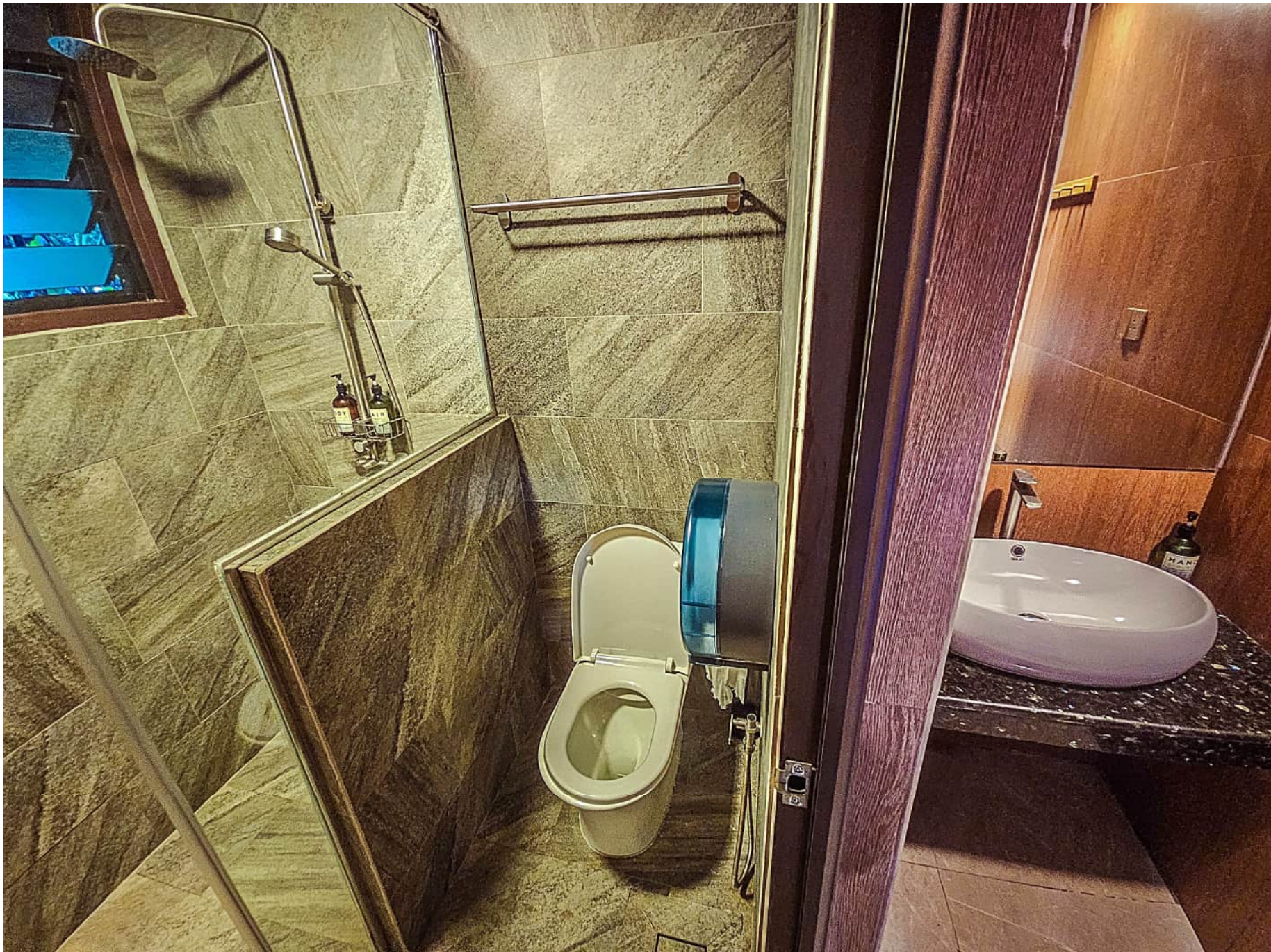
WiFi (Maxis 5G) is provided here. The password is 12345678



Bedroom 1 with a king sized bed + bunk bed, sleeps 4, with a 50" TV, work table, ensuite bathroom, hair dryer + air conditioning. Towels are provided.



Bedroom 1



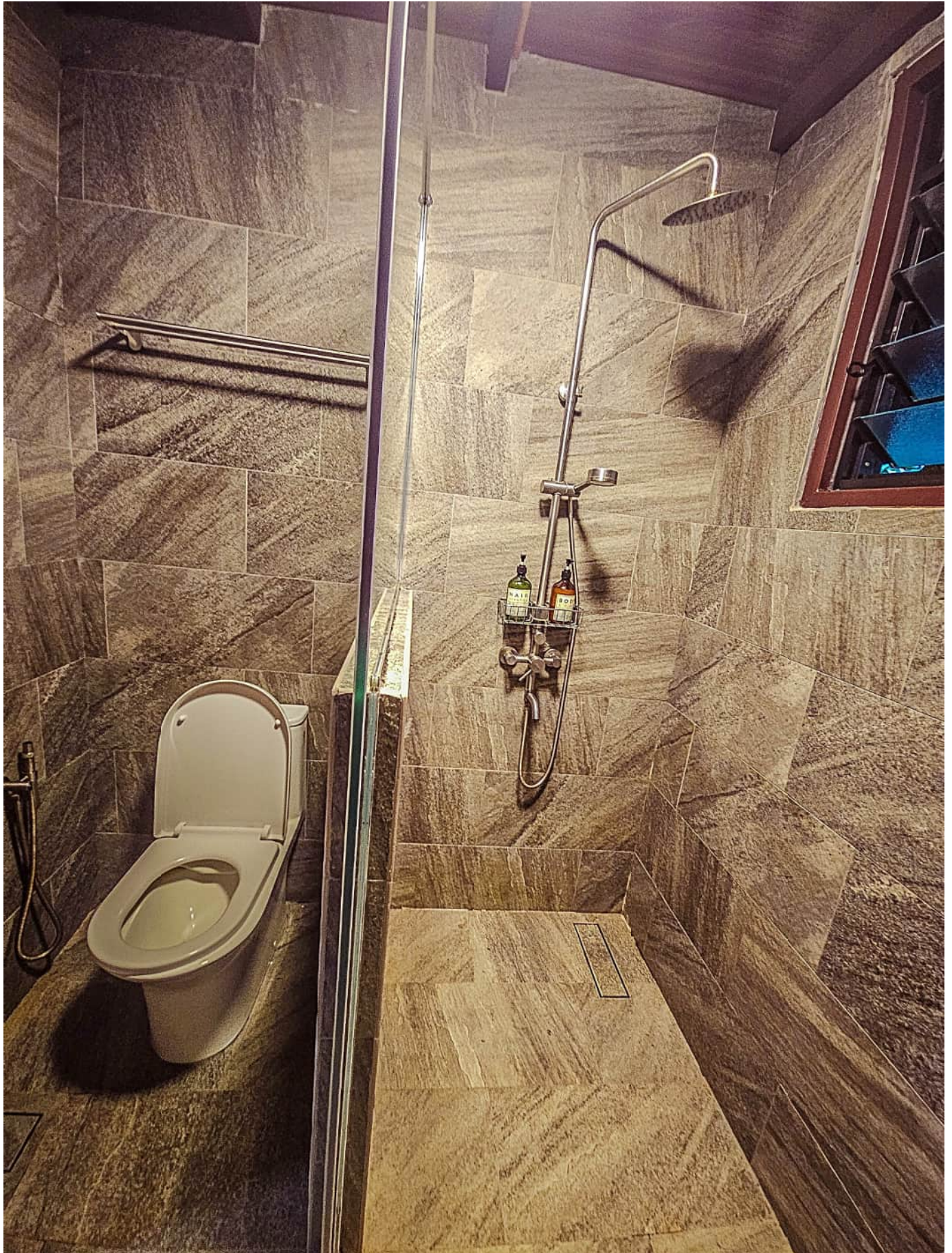
Ensuite bathroom in bedroom 1 with hot water shower. Body shower gel, hair shampoo and hand soap is provided.



*Bedroom 2 with a king sized bed, sleeps 2, with a work table, hair dryer + air conditioning. Towels are provided.
Bathroom is directly beside, shared with Living Hall.*



Bedroom 2



*Bathroom that is beside bedroom 2 & accessible through the living hall with hot water shower.
Body shower gel, hair shampoo and hand soap is provided.*



There is a privacy curtain for the basin area. Solid door for the bathroom.



*Bedroom 3 (attic style) with 8 single beds, sleeps up to 8 pax, ensuite bathroom, hair dryer + air conditioning.
Towels, sejadah & kiblat are provided.*



Bedroom 3 (attic style)



Ensuite bathroom in bedroom 3 with hot water shower room & skylights. Body shower gel, hair shampoo and hand soap are provided.



Ensuite bathroom in bedroom 3 with hot water shower room & skylights. Body shower gel, hair shampoo and hand soap are provided.



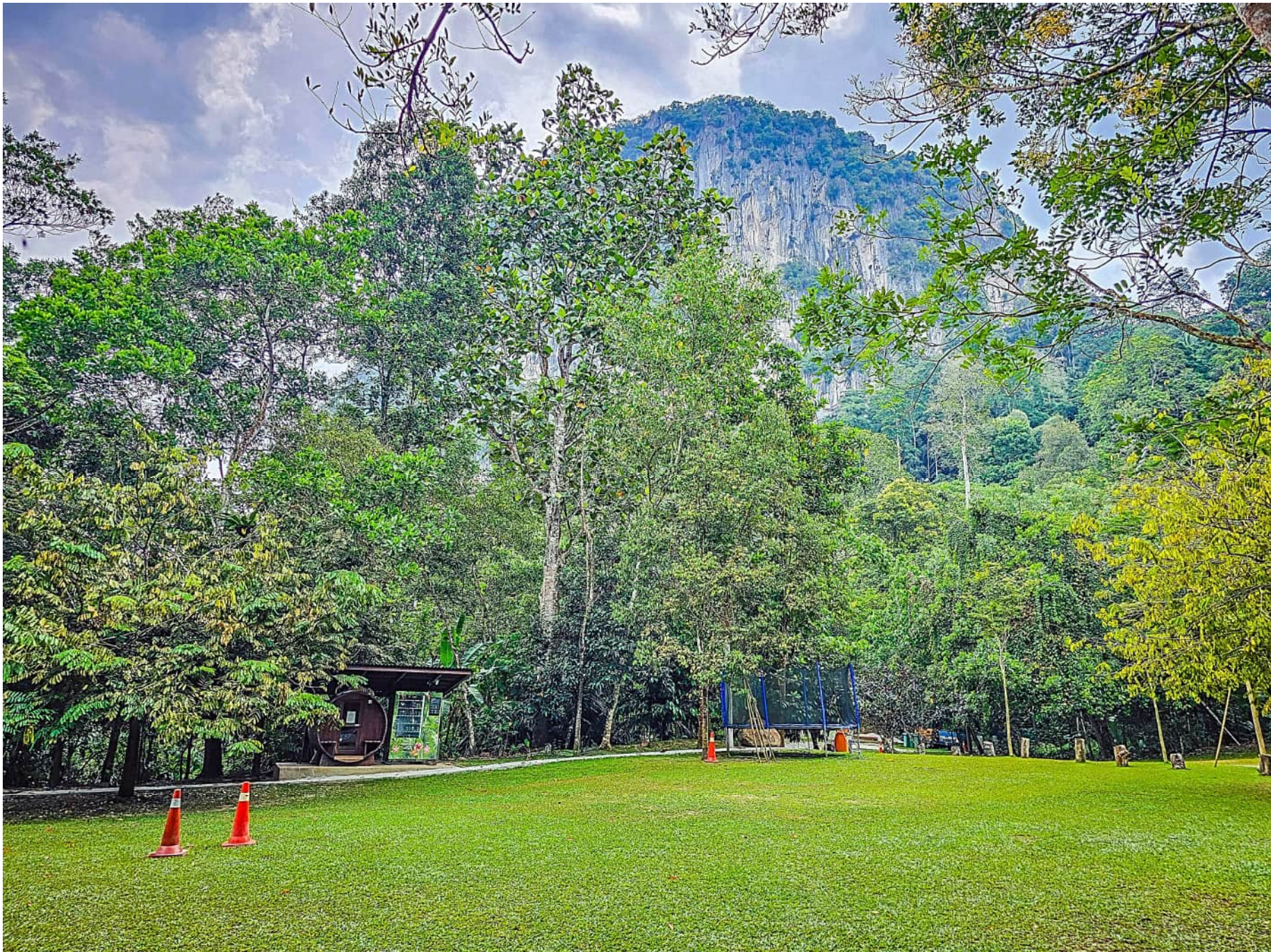
Ensuite bathroom in bedroom 3 with hot water shower room & skylights. Body shower gel, hair shampoo and hand soap are provided.



To reach bedrooms 4 and 5, there is a set of stairs leading down from the open deck.



There are two school buses converted into two air-conditioned suraus (one for men and one for women). This photo shows the men's surau.



Host your outdoor activities on the large green field or just simply lay on the grass, with Bukit Takun as the backdrop



A barrel sauna is available to use during your stay, with an ewallet vending machine for snacks and drinks.

shared facility

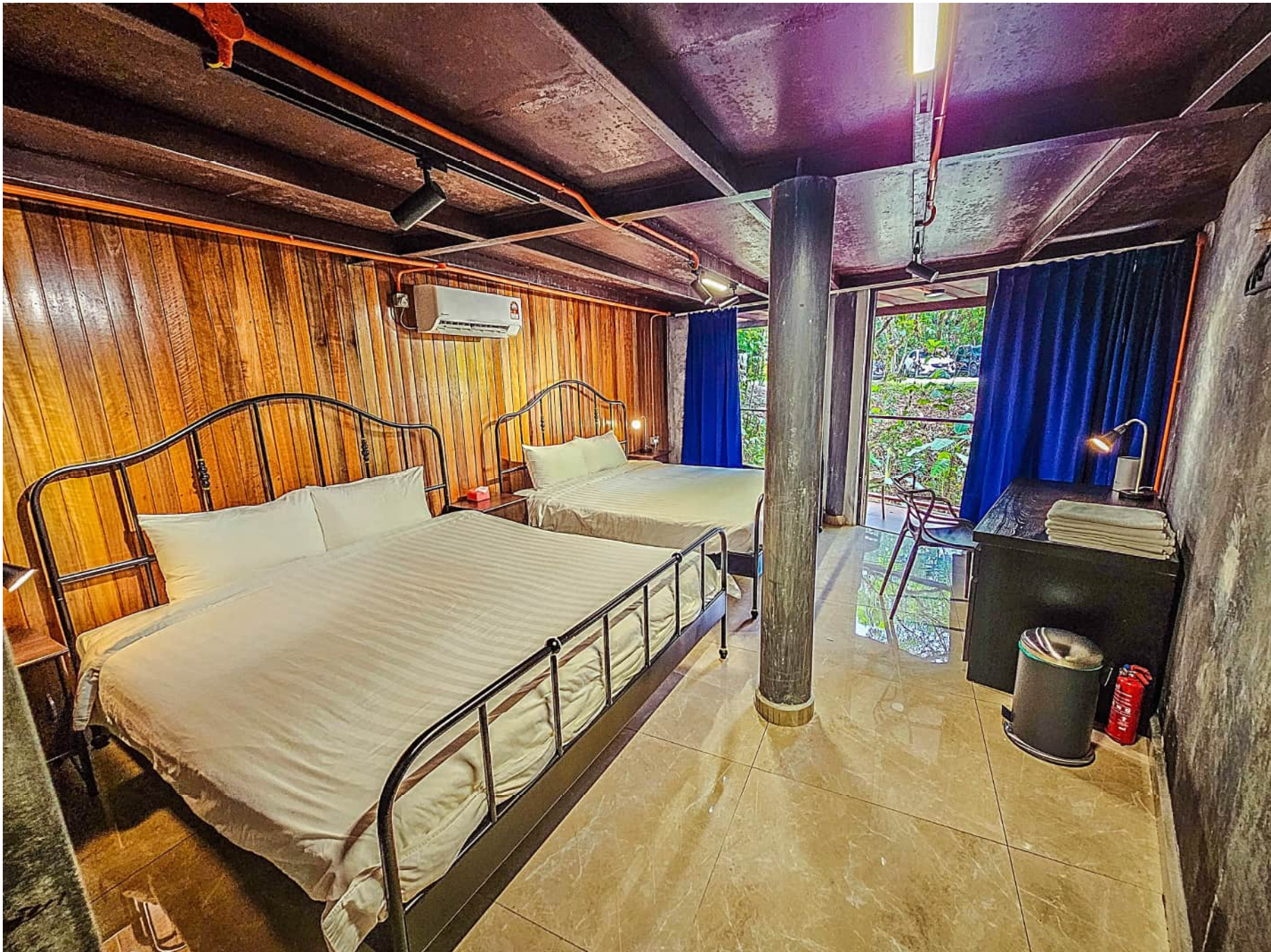
COTTAGE



A 14' trampoline for all ages to enjoy



Badminton netting, racquets, shuttlecocks provided for a game of badminton. We also have a frisbee available for use at the field.



Bedroom 4 with two king sized beds, sleeps 4, with a work table, ensuite bathroom, hair dryer + air conditioning. Towels are provided.



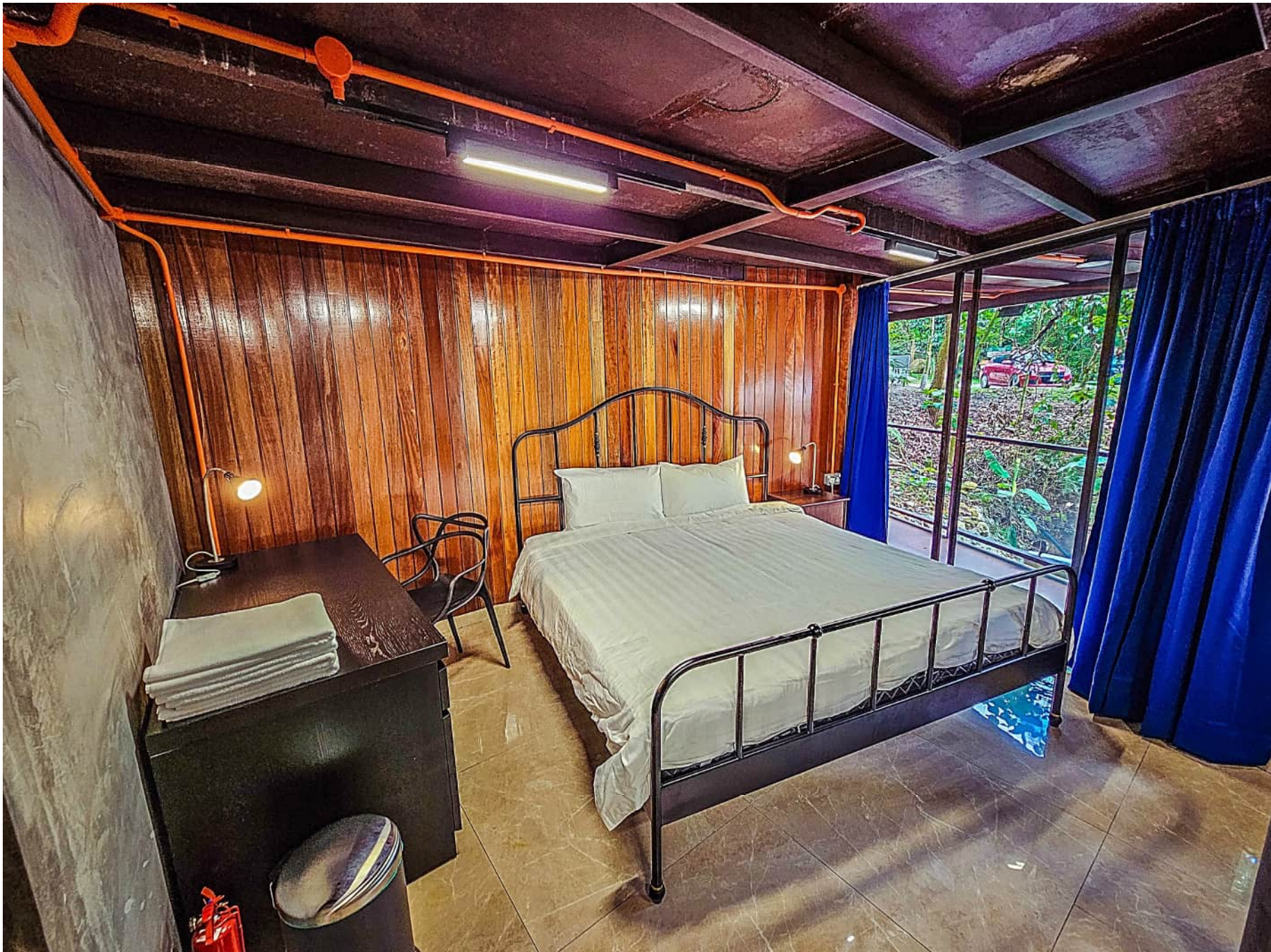
Bedroom 4



Ensuite bathrooms 4 & 5 are identical, with hot water shower. Body shower gel, hair shampoo and hand soap are provided.



Bedroom 5 with two king sized beds, sleeps 4, with a work table, ensuite bathroom, hair dryer + air conditioning. Towels are provided.



Bedroom 5

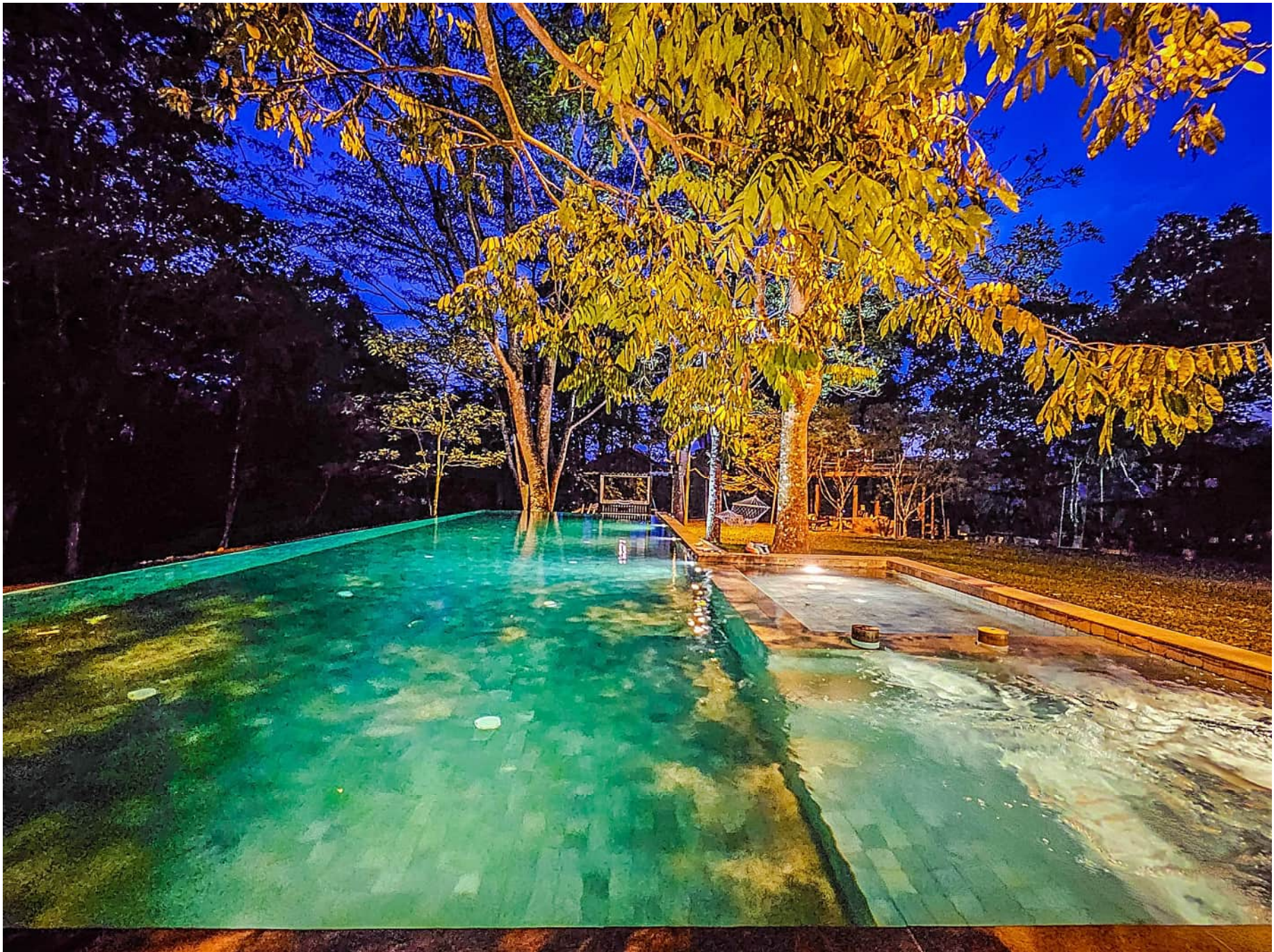


Bedroom 5

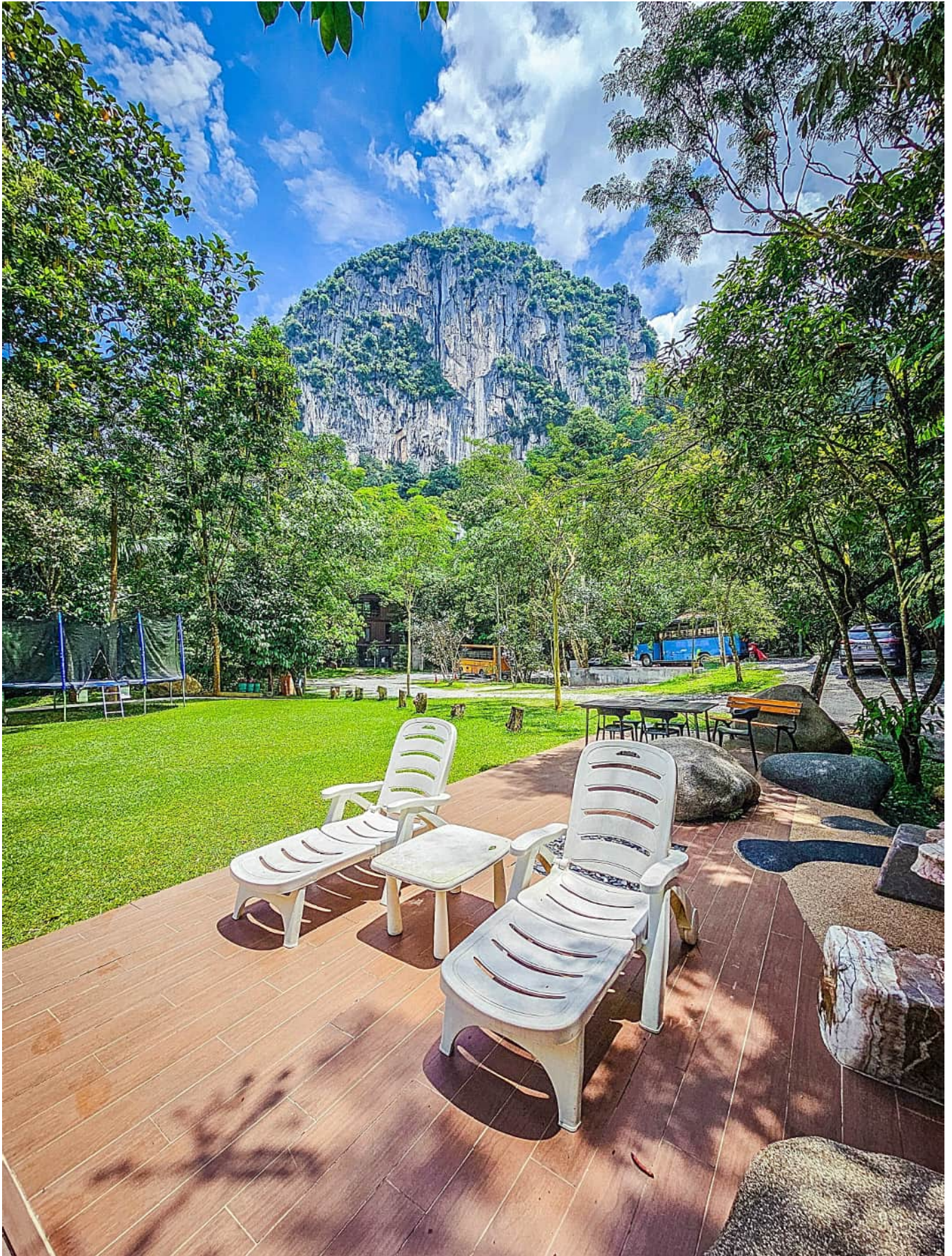


View of Bukit Takun. The Cottage is adjacent, about 300m away.

shared facility



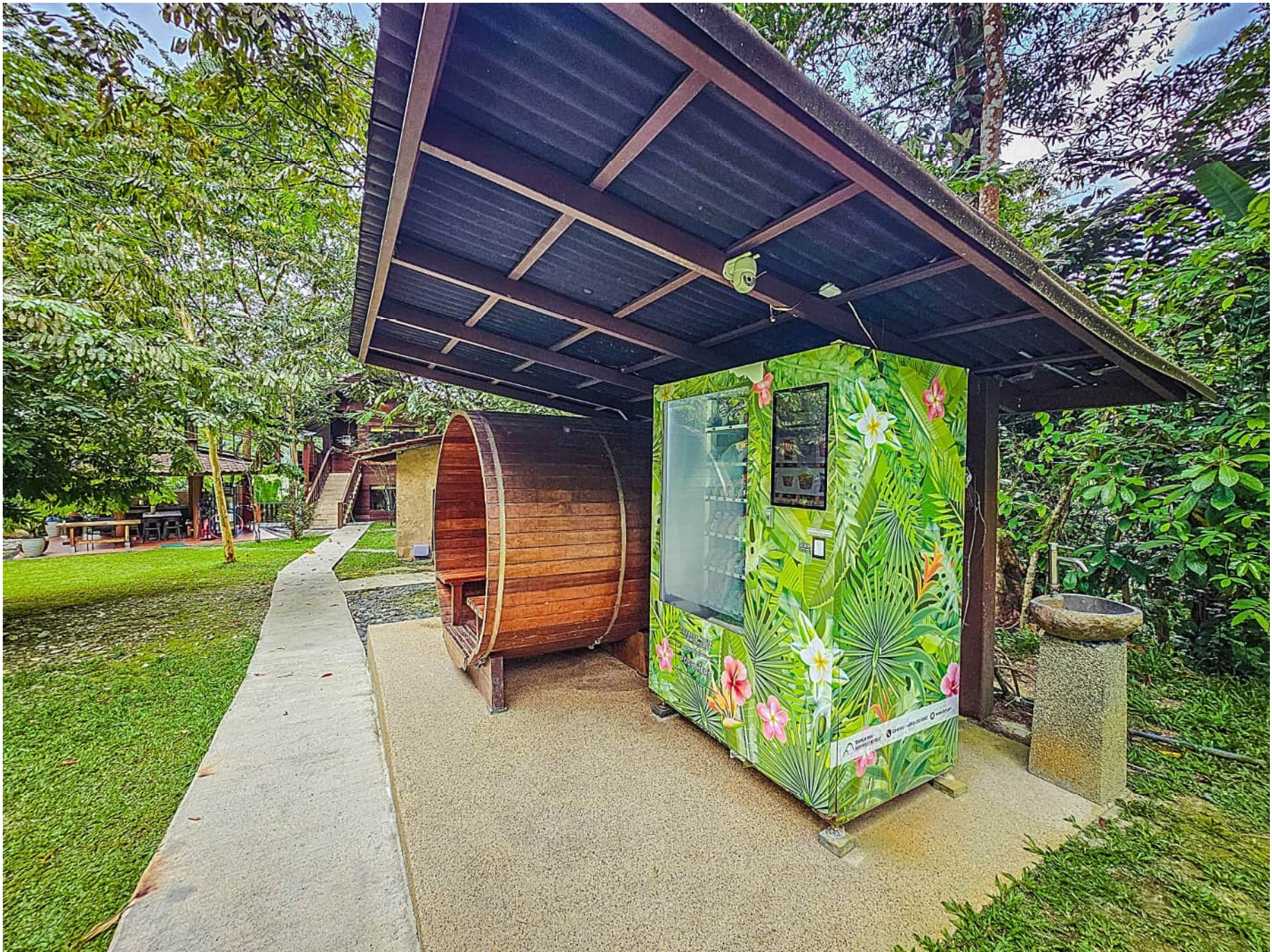
The shared swimming pool & jacuzzi can be used in the evenings till 10pm.



Spend your day lounging by the pool.

shared facility

COTTAGE





Interior of barrel sauna, which can fit comfortably 4 persons at each time, at recommended 15 mins intervals.

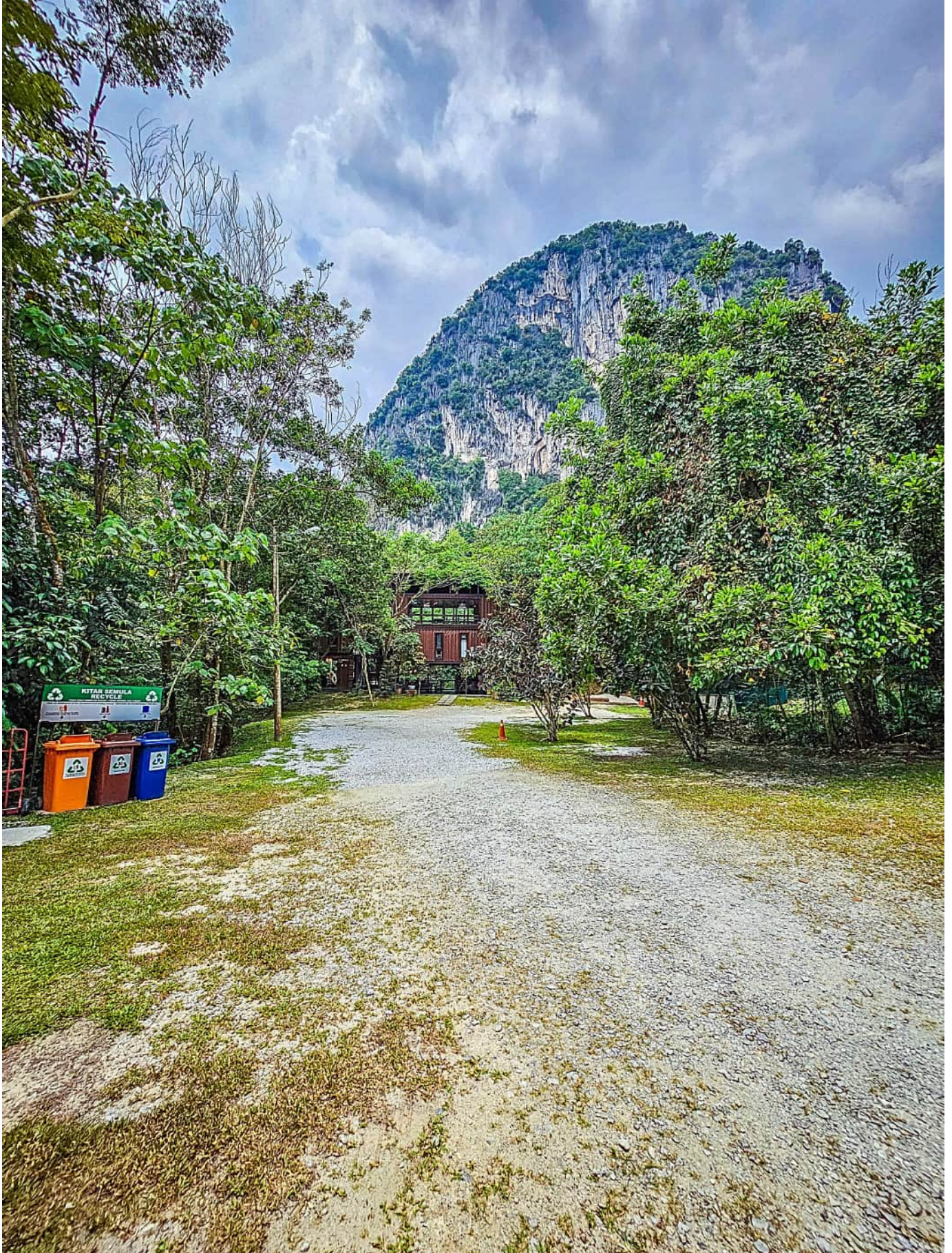
Water sprinkled on the hot sauna rocks for a sauna bath.

entrance

COTTAGE



The entrance pathway leading up hill to the Retreat & Cottage



There is ample additional car parking space here. Recycling bins are located at the parking area.

shared facility

COTTAGE



Ample car parking spaces. No parking charges.

outside of our premises

COTTAGE



Sungai Kanching Waterfalls is a 5 minute drive away. (1.5 km)

shared facility

COTTAGE



Swimming in nature. Villa is another unit in the compound, seen in the end of this photo.

shared facility

COTTAGE



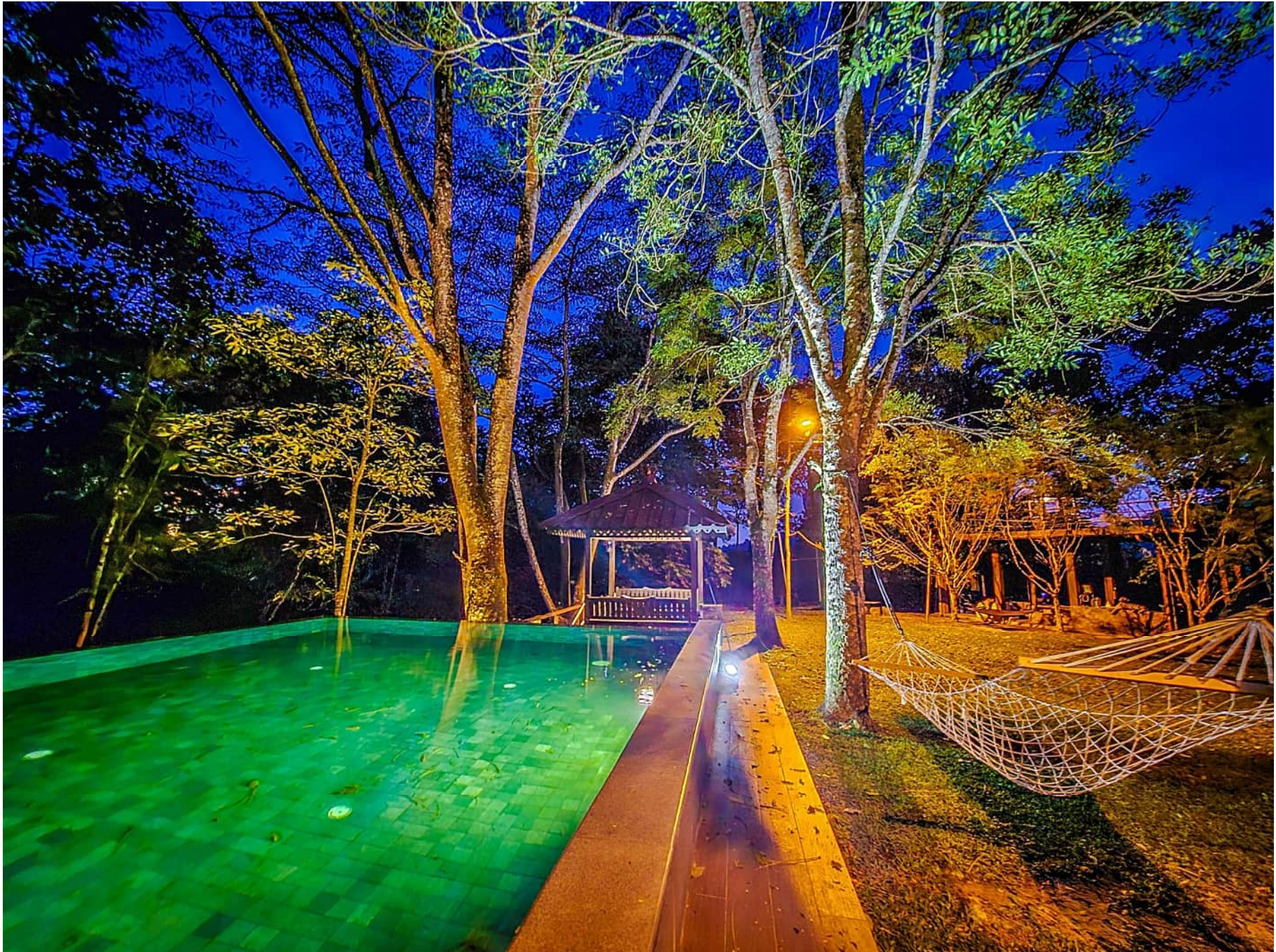
Swimming in nature with Bukit Takun as backdrop. Pool is a shared pool.

shared facility



Evening use of the jacuzzi

shared facility



An evening swim in nature / lay on the hammocks. Pool is a shared pool.